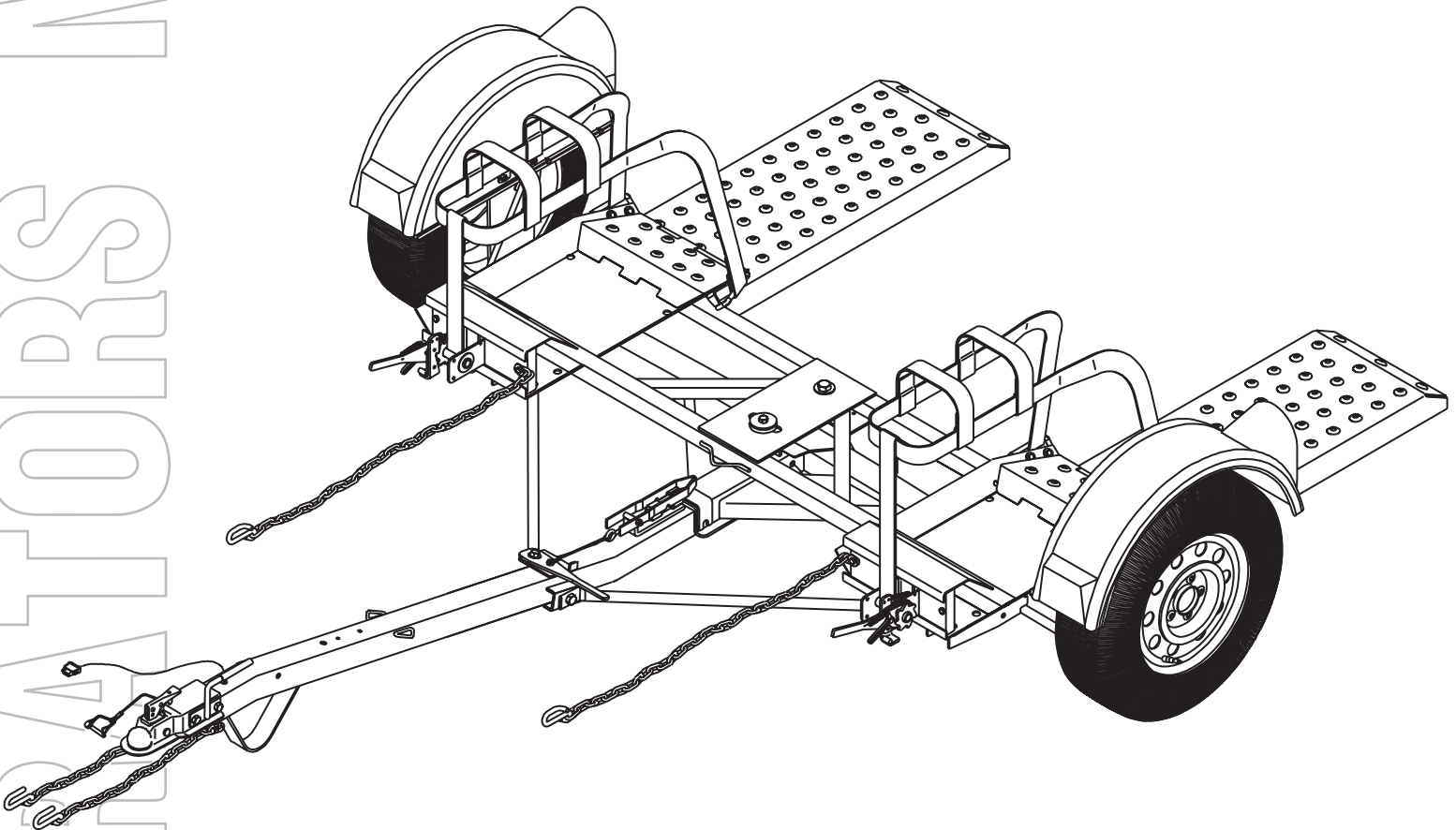


Demco manufacturing

Dethmers Manufacturing Company

Rent-A-Kaddy

GT300, GT300SB & RK300



ASSEMBLY
CALIBRATION
OPERATION
REPLACEMENT PARTS

READ complete manual CAREFULLY
BEFORE attempting operation.

Doing Our Best To Provide You The Best

OPERATORS MANUAL

WARNING

Exceeding weight limitations or not using a towing vehicle larger and at least 1,000 lbs. heavier than the tow dolly and the towed vehicle combined can result in loss of towing vehicle control, separation of the tow dolly from the towing vehicle, or separation of the towed vehicle from the tow dolly, causing severe personal injury, death, or property damage.

All vehicles to be towed on tow dollies must be towed with the front axle on the dolly.

It is recommended that two people set-up and load this piece of equipment

No implied warranties. To the extent permitted by applicable law, this product is sold without warranties. In particular, DEMCO makes no implied warranty of merchantability or fitness for a particular purpose.

Table of Contents

Waranty Registration	Page 3-4
Safety Instructions	Page 5-9
Bolt Torque	Page 10
Loading Instructions.....	Page 11
Assembly Instructions	Page 12-13
Wiring Instructions	Page 13
GT300 & GT300SB Tow Dolly Parts Breakdown	Page 14-15
RK300 Tow Dolly Parts Breakdown	Page 16-17
Winch Parts Breakdown	Page 18
Tilt-Bed Latch Parts Breakdown	Page 18
Actuator Parts Breakdown	Page 19
10" Brake Cluster & Drum Breakdown	Page 20
Brake System Breakdown	Page 21
Tow Dolly Options	Page 22-23



Warranty Registration

Dethmers Manufacturing Company
4010 320th Street • Box 189 • Boyden, Iowa 51234
Toll Free 800-54DEMCO (800-543-3626) • FAX 800-845-6420
www.demco-products.com

Ag	<input type="radio"/>
RV	<input type="radio"/>
Rental	<input type="radio"/>
Brakes	<input type="radio"/>
Marine	<input type="radio"/>

	Very Satisfied	Satisfied	Dissatisfied	Very Dissatisfied
How satisfied are you with our product?	<input type="radio"/>	<input type="radio"/>	<input type="radio"/>	<input type="radio"/>
How satisfied are you with the dealership/distributor sales staff?	<input type="radio"/>	<input type="radio"/>	<input type="radio"/>	<input type="radio"/>
Dealer/Distributor Name _____ City _____ State _____				
How satisfied are you with the company sales staff?	<input type="radio"/>	<input type="radio"/>	<input type="radio"/>	<input type="radio"/>
How satisfied are you with the delivery?	<input type="radio"/>	<input type="radio"/>	<input type="radio"/>	<input type="radio"/>
Did you have any contact with a Demco Representative?	YES	NO		
If YES , how satisfied were you?	<input type="radio"/>	<input type="radio"/>	<input type="radio"/>	<input type="radio"/>
I would recommend this product to my family and friends.	YES	NO		
Would you purchase again from DEMCO?	YES	NO		
Since taking delivery, have you been contacted by the dealer?	YES	NO		
Did you have any problems with this DEMCO product?	YES	NO		
If YES , are you satisfied with the company's resolution of your problem?	<input type="radio"/>	<input type="radio"/>	<input type="radio"/>	<input type="radio"/>

Why did you purchase this product? _____

Please list the specific source of information prompting this purchase.

After purchasing this product, do you see any needed product improvement? _____ If yes, what improvement? _____

What other products would you like to see DEMCO offer? _____

Comments _____

Owner's Name: _____ Mailing Address: _____

City: _____ State: _____ Zip Code: _____

Model#: _____

Serial #: _____

Purchase Date: _____

Owner's Signature: _____

Please return to DETHMERS MFG. CO. By FAX or tri-folding this form to the backside, it is pre-addressed.

Postage

*Dethmers Manufacturing Company
4010 320th Street, Box 189
Boyden, Iowa 51234*

SAFETY

TAKE NOTE! THIS SAFETY ALERT SYMBOL FOUND THROUGHOUT THIS MANUAL IS USED TO CALL YOUR ATTENTION TO INSTRUCTIONS INVOLVING YOUR PERSONAL SAFETY AND THE SAFETY OF OTHERS. FAILURE TO FOLLOW THESE INSTRUCTIONS CAN RESULT IN INJURY OR DEATH.



THIS SYMBOL MEANS

ATTENTION

BECOME ALERT

YOUR SAFETY IS INVOLVED!

SIGNAL WORDS

Note the use of the following signal words **DANGER**, **WARNING**, and **CAUTION** with the safety messages. The appropriate signal word for each has been selected using the following guidelines:

DANGER:

Indicates an imminently hazardous situation that, if not avoided, will result in death or serious injury. This signal word is to be limited to the most extreme situations typically for Rent-A-Kaddy components which, for functional purposes, cannot be guarded.

WARNING:

Indicates a potentially hazardous situation that, if not avoided, could result in death or serious injury, and includes hazards that are exposed when guards are removed. It may also be used to alert against unsafe practices.

CAUTION:

Indicates a potentially hazardous situation that, if not avoided, may result in minor or moderate injury. It may also be used to alert against unsafe practices.

If you have questions not answered in this manual, or require additional copies, please contact your dealer or Dethmers Mfg. Co., P.O. Box 189, 4010 320th Street, Boyden, IA 51234
ph: (712) 725-2311 Toll Free: 1-800-543-3626 Fax: (712) 725-2380 or 1-800-845-6420
<http://www.demco-products.com>



REMEMBER

Your best assurance against accidents is a careful and responsible operator. If there is any portion of this manual or function you do not understand, contact your local authorized dealer or manufacturer.

SAFETY...YOU CAN LIVE WITH IT



EQUIPMENT SAFETY GUIDELINES

Every year many accidents occur which could have been avoided by a few seconds of thought and a more careful approach to handling equipment. You, the operator, can avoid many accidents by observing the following precautions in this section. To avoid personal injury, study the following precautions and insist those working with you, or you yourself, follow them.

Replace any caution, warning, danger or instruction safety decal that is not readable or is missing. Location of such decals is indicated in this booklet.

Do not attempt to operate this Rent-A-Kaddy under the influence of alcohol or drugs.

Review the safety instructions with all users.

Operator should be a responsible adult. **DO NOT ALLOW PERSONS TO OPERATE OR ASSEMBLE THIS UNIT UNTIL THEY HAVE DEVELOPED A THOROUGH UNDERSTANDING OF THE SAFETY PRECAUTIONS AND HOW IT WORKS.**

Do not paint over, remove, or deface any safety signs or warning decals on your Rent-A-Kaddy . Observe all safety signs and practice the instructions on them.

Never exceed the limits of a Ren-A-Kaddy If its ability to do a job safely is in question **DON'T TRY IT.**



LIGHTING AND MARKING

It is the responsibility of owner to know lighting and marking requirements of local highway authorities and to install and maintain equipment to provide compliance with regulations.

Light bar kits are available from your dealer or from manufacturer.



TIRE SAFETY

- Failure to follow proper procedures when mounting a tire on a rim can produce an explosion which may result in serious injury or death.
- Do not attempt to mount a tire unless you have proper equipment and experience to do the job.
- Inflating or servicing tires can be dangerous. Whenever possible, trained personnel should be called to service and/or mount tires.
- Rent-A-Kaddy tires must be inflated to recommended P.S.I. . See decal on Rent-A-Kaddy for correct pressure.
- Always order and install tires and wheels with appropriate type and load capacity to meet or exceed gross weight of unit.



SAFETY SIGN CARE

- Keep safety signs clean and legible at all times.
- Replace safety signs that are missing or have become illegible.

- Replacement parts that displayed a safety sign should also display current sign.
- Safety signs are available from your distributor, dealer parts department, or factory.

How to install safety signs:

- Be sure installation surface is clean and dry.
- Decide on exact position before you remove backing paper.
- Remove smallest portion of split backing paper.
- Align decal over specified area and carefully press small portion with exposed sticky backing in place.
- Slowly peel back remaining paper and carefully smooth remaining portion of decal into place.
- Small air pockets can be pierced with a pin and smoothed out using piece of decal backing paper.



BEFORE OPERATION:

- Carefully study and understand this manual.
- Keep wheel and lug nuts tightened to specified torque.
- Assure tires are inflated evenly.
- Give unit a visual inspection for any loose bolts, worn parts, or cracked welds, and make necessary repairs. Follow maintenance safety instructions included in this manual.
- Be sure there are no tools lying on or in Rent-A-Kaddy
- Do not use unit until you are sure that area is clear, especially around children and animals.
- Don't hurry learning process or take unit for granted. Ease into it and become familiar with your new Rent-A-Kaddy.
- Practice operation of your Rent-A-Kaddy and its attachments. Completely familiarize yourself and other operators with its operation before using.
- Make sure that brakes are evenly adjusted (if equipped with brakes)
- Securely attach to towing vehicle. Use an appropriately sized and rated hitch ball and attach safety chains.
- Do not allow anyone to stand between tongue or hitch and towing vehicle when backing up to unit.
- Make sure tow rating on vehicle is high enough for what it is towing.



DURING OPERATION

- **SAFETY CHAIN** - Always follow state and local regulations regarding safety chains and auxiliary lighting when towing. Be sure to check with local law enforcement agencies for your own particular regulations. Only safety chains (not elastic or nylon/plastic tow straps) should be used to retain connection between towing vehicle and towed unit in event of separation.
- Do not load towed vehicle with cargo. Towed vehicles exceeding weight limits will overload Rent-A-Kaddy and may cause serious injury and damage.
- Criss cross safety chains under tongue, secure to mounting loops on towing vehicle.

- Secure emergency brake actuator cable to mounting loop on towing vehicle.
- Beware of bystanders, **PARTICULARLY CHILDREN!** Always look around to make sure it is safe to start engine of towing vehicle or move unit. This is particularly important with higher noise levels, as you may not hear people shouting.
- **NO PASSENGERS ALLOWED-** Do not carry passengers anywhere on or in towed unit.
- When halting operation, even periodically, set towing vehicle parking brake, shut off engine, and **remove ignition key**.
- Be extra careful on inclines.
- **MANEUVER TOWING VEHICLE AT SAFE SPEEDS. Do not exceed 55 M.P.H.**
- Avoid overhead wires or other obstacles. Contact with overhead lines could cause serious injury or death.
- Avoid loose gravel, rocks, and holes; they can be dangerous for unit operation or movement.
- Allow for unit length when making turns.
- Do not work under raised components or attachments unless securely positioned and blocked.
- Keep all bystanders and pets clear of work area.
- Operate towing vehicle from operators seat only.
- As a precaution, recheck hardware on Rent-A-Kaddy every 50 miles, and correct all problems. Follow maintenance safety procedures.



FOLLOWING OPERATION

- Following operation, or when unhitching, stop towing vehicle, set parking brake, shut off engine and **remove ignition key**.
- Store Rent-A-Kaddy in area away from human activity.
- Do not permit children to play on or around stored Rent-A-Kaddy.
- Make sure parked Rent-A-Kaddy is on hard, level surface.
- Wheel chocks may be needed to prevent unit from rolling.

HIGHWAY AND TRANSPORT OPERATIONS

- Adopt safe driving practices:
 - Always drive at safe speed relative to local conditions and ensure that your speed is low enough for an emergency stop. **Do not exceed 55 M.P.H.**
 - Reduce speed prior to turns to avoid risk of overturning.
 - Always keep towing vehicle in gear to provide engine braking when going downhill. **Do not coast.**
 - **Do not drink and drive!**
- Comply with state and local laws governing highway safety.

- Local laws should be checked for all highway lighting and marking requirements.
- Plan your route to avoid heavy traffic.
- Be a safe and courteous driver. Always yield to oncoming traffic in all situations, including narrow bridges, intersections, etc.
- Watch for obstructions overhead and to both sides while transporting.
- Operate with maximum visibility at all times. Make allowances for increased length and weight of Rent-A-Kaddy when making turns and stopping.



PERFORMING MAINTENANCE

- Good maintenance is your responsibility. Poor maintenance is an invitation to trouble.
- Make sure there is plenty of ventilation. Never operate engine of towing vehicle in a closed building. Exhaust fumes may cause asphyxiation.
- Before working on Rent-A-Kaddy, stop towing vehicle, set parking brake, turn off engine and **remove ignition key**.
- Always block wheels and never use a jack as sole support.
- Always use proper tools or equipment for job at hand.
- Use extreme caution when making adjustments.
- Follow torque chart in this manual when tightening bolts and nuts.
- Openings in skin and minor cuts are susceptible to infection from brake fluid.
Without immediate medical treatment, serious infection and reactions can occur.
- After servicing, be sure all tools, parts and service equipment are removed.
- Do not allow grease or oil to build up on any step or platform.
- When replacing bolts, refer to owners manual for proper size and grade.
- Refer to bolt torque chart for head identification marking.
- Where replacement parts are necessary for periodic maintenance and servicing, genuine factory replacement parts must be used to restore your Rent-A-Kaddy to original specifications. Manufacturer will not claim responsibility for use of unapproved parts and/or accessories or other damages as a result of their use.
- If Rent-a-Kaddy has been altered in any way from original design, manufacturer does not accept any liability for injury or warranty.
- A fire extinguisher and first aid kit should be kept readily accessible while performing maintenance on this Rent-A- Kaddy.

BOLT TORQUE

TORQUE DATA FOR STANDARD NUTS, BOLTS, AND CAP SCREWS.

Tighten all bolts to torques specified in chart unless otherwise noted. Check tightness of bolts periodically, using bolt chart as guide. Replace hardware with same grade bolt.

NOTE: Unless otherwise specified, high-strength Grade 5 hex bolts are used throughout assembly of equipment.

Bolt Torque for Standard bolts *



Torque Specifications

Torque Wheel Lug Nuts to 120 ft/lbs

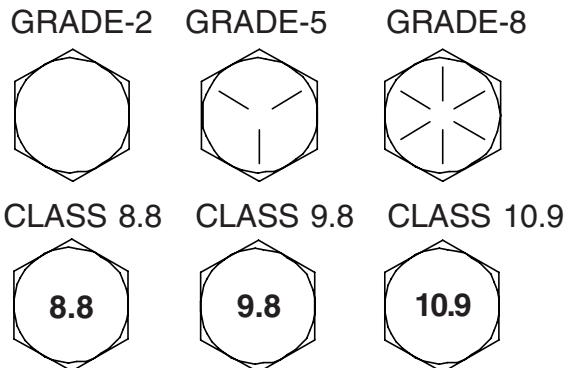
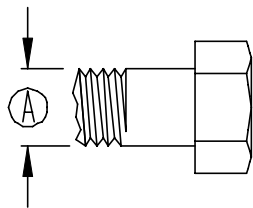
"A"	GRADE 2		GRADE 5		GRADE 8	
	lb-ft	(N.m)	lb-ft	(N.m)	lb-ft	(N.m)
1/4"	6	(8)	9	(12)	12	(16)
5/16"	10	(13)	18	(25)	25	(35)
3/8"	20	(27)	30	(40)	45	(60)
7/16"	30	(40)	50	(70)	80	(110)
1/2"	45	(60)	75	(100)	115	(155)
9/16"	70	(95)	115	(155)	165	(220)
5/8"	95	(130)	150	(200)	225	(300)
3/4"	165	(225)	290	(390)	400	(540)
7/8"	170	(230)	420	(570)	650	(880)
1"	225	(300)	630	(850)	970	(1310)

Bolt Torque for Metric bolts *

"A"	CLASS 8.8		CLASS 9.8		CLASS 10.9	
	lb-ft	(N.m)	lb-ft	(N.m)	lb-ft	(N.m)
6	9	(13)	10	(14)	13	(17)
7	15	(21)	18	(24)	21	(29)
8	23	(31)	25	(34)	31	(42)
10	45	(61)	50	(68)	61	(83)
12	78	(106)	88	(118)	106	(144)
14	125	(169)	140	(189)	170	(230)
16	194	(263)	216	(293)	263	(357)
18	268	(363)	--	--	364	(493)
20	378	(513)	--	--	515	(689)
22	516	(699)	--	--	702	(952)
24	654	(886)	--	--	890	(1206)

Torque figures indicated are valid for non-greased or non-oiled threads and heads unless otherwise specified. Therefore, do not grease or oil bolts or cap screws unless otherwise specified in this manual. When using locking elements, increase torque values by 5%.

* GRADE or CLASS value for bolts and cap-screws are identified by their head markings.



WARNING!

Read the following information completely before hooking up, loading, using, unloading or unhooking the tow dolly. Failure to abide by the following can result in damage to property, severe personal injury and/or death.

IMPORTANT DO'S & DON'TS

- ⚠ Read the towing instructions in the towed vehicle's owner's manual.
- ⚠ Use a 2", 5000 lb. (or greater) capacity ball for a Tow Dolly without surge brakes and a 2", 6000 lb. (or greater) capacity ball for a Tow Dolly with surge brakes.
- ⚠ Make sure the towing vehicle's parking brake is fully engaged before starting hookup, loading, unloading or unhooking of the Tow Dolly.
- ⚠ Do not load the towed vehicle onto the Tow Dolly until the Tow Dolly is completely and properly hooked up to the towing vehicle and setting on a level surface.
- ⚠ Always drive the front wheels of the towed vehicle onto the Tow Dolly. Do not load backwards.
- ⚠ Tail lights and stop lights must be hooked up and operating properly at all times.
- ⚠ Do not load a towed vehicle that exceeds the weight or size limits onto the Tow Dolly.
- ⚠ Always have someone safely guide you when driving the towed vehicle onto the Tow Dolly.
- ⚠ Be sure the tires of your towed vehicle and the Tow Dolly are in good condition and inflated to the proper pressures. Tire pressure may increase during travel - do not bleed off this increase in pressure.
- ⚠ Do not back up your towing vehicle when the Tow Dolly is attached. The Tow Dolly swivels both at the coupler and at the car platform. If you must back up, unload the towed vehicle first, disconnect the Tow Dolly and move the vehicle and tow dolly separately. *Play It Safe...park where you can pull ahead when leaving.*
- ⚠ Do not exceed 45 miles per hour, or any lower posted speed limit.
- ⚠ Avoid sharp turns or swerves.
- ⚠ Braking distance increases when using a Tow Dolly. Use caution and always allow sufficient distance for braking.
- ⚠ Do not transport passengers or cargo in the vehicle being towed.
- ⚠ Do not unhook the Tow Dolly from the towing vehicle until the towed vehicle is completely unloaded from the Tow Dolly.

IMPORTANT INFORMATION

Customer Responsibilities

The customer assumes all risks inherent in the operation, use, or possession of the Tow Dolly. Towing a vehicle is the customer's responsibility and it is the customer who must ensure that the weight and size limits of the Tow Dolly rented will not be exceeded by the vehicle being towed. Any injury or damage that results from exceeding weight or size limits is the sole responsibility of the customer.

Towing Vehicle Requirements

The customer assumes all responsibility for the towing vehicle's fitness and suitability to perform the towing task in a safe, legal, and reliable manner. These responsibilities may include, but are not limited to:

- The towing vehicle's weight being at least 1000 lbs. greater than the weight of the tow dolly and the towed vehicle.
- Compliance with towing restrictions as stated by the towing vehicle's owner's manual and/or manufacturer.
- The towing vehicle having, as a minimum, a Class 3, 5000 lb. hitch and hitch ball for a Tow Dolly without surge brakes. Or a class 3, 6000 lb. hitch and hitch ball for a Tow Dolly with surge brakes. (Hitch ball must be 2". Do not use any other size hitch ball.)
- The towing vehicle being in good condition.
- The towing vehicle having a current federal and/or state inspection where applicable, and complying with any applicable laws.
- Making sure all lights are properly hooked up and operating at all times.
- The towing vehicle's hitch being approximately 20 inches to the top of the ball. Make sure that the hitch and the hitch ball are in good condition and not rusted, loose or stripped. Both the hitch and the hitch ball must be securely attached to the towing vehicle.

Load Weight and Size Limits

Load Limits (total weight of towed vehicle). A towed vehicle exceeding the weight limit will overload the tow dolly and may cause serious injury and damage to both the towed vehicle and the Tow Dolly.

For Tow Dolly without surge brakes:

- Front-Wheel-Drive Vehicles: 4300 lbs. max.
- Rear-Wheel-Drive Vehicles: 4300 lbs. max.

For Tow Dolly with surge brakes:

- Front-Wheel-Drive Vehicles: 4500 lbs. max.
- Rear-Wheel-Drive Vehicles: 4800 lbs. max.

Size Limits. A towed vehicle exceeding the width limit will obstruct the platform's swivel action when towing and could damage the towed vehicle's tires and the fenders.

- Maximum Vehicle Tread & Body Width: 76" from outside of left tire to outside of right tire on the front axle.

TOWING INSTRUCTIONS

The tow dolly may only be used with a vehicle that is equipped with a 2", 5,000 lb. capacity ball. When used properly, the tow dolly can provide a safe and effective means to transport a vehicle within the following limitations.

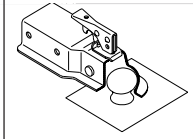
WARNING: Read all Tow Dolly instructions and load limitations before using Tow Dolly.

IMPORTANT

Tow dolly must be attached to the towing vehicle before loading the towed vehicle onto the tow dolly. Do not back the vehicle with the tow dolly attached, as this will damage the towed vehicle and tow dolly. If in a situation where backing is necessary, disconnect the towed vehicle from the tow dolly, and the tow dolly from the towing vehicle and move separately.

HOOK-UP OF THE TOW DOLLY

1. Loosen coupler loop nut. Place the coupler of the tow dolly over the 2" hitch ball on the truck. Be sure the coupler is fully seated down over the ball.

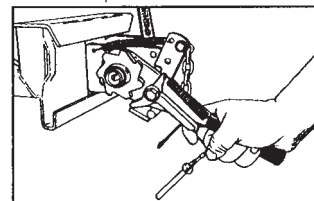


Make sure that the hitch and hitch ball are in good condition and not rusted, loose or stripped. Both the hitch and hitch ball must be securely attached to the towing vehicle.

2. Completely tighten the coupler loop nut. Pull up on the tow dolly tongue to be sure it is properly secured.
3. Connect the color coded wires from the tow dolly to the corresponding color coded posts on the towing vehicle's electrical box.
4. Crisscross the safety chains under tongue and secure to towing vehicle frame. Allow some slack in the chains for movement during turns made by the towing vehicle and tow dolly.

HOOK-UP OF THE TOWED VEHICLE TO TOW DOLLY

1. Be sure that the towing vehicle and tow dolly are straight and on level ground.
2. Make sure that the tow dolly platform is straight.
3. Remove safety pins on ratchet assembly and unroll straps.



4. Lay straps along fender side of tow dolly, off of tow dolly platform.
5. Allow tow dolly platform to tilt back by releasing the locking pin.
6. Slowly drive the front end of the towed vehicle onto the tow dolly until tires on the towed vehicle are resting against the tow dolly wheel stops. The platform will go into upright position.

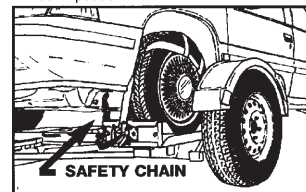
Make certain that the towed vehicle is centered on tow dolly platform since the platform swivels during turns. Adequate space is required between the tow dolly fenders and towed vehicle.

CAUTION: NEVER BACK A TOWED VEHICLE ONTO A TOW DOLLY.

7. Locking pin on platform must go into the locked position.
8. For safety reasons, engage the parking brake of the towed vehicle (see item #13) and place transmission in low gear (standard) or park (automatic).
9. Center the tie down ratchets in front of the

towed vehicle tires and pull the tow dolly tire straps forward over the tires.

10. Tighten each strap securely by pulling up and down as many times as necessary on the tie down ratchet assembly handle until the tire flats-tens slightly against the tire stop. Place handle in down position.



11. Hook up safety chains from tow dolly platform to the frame of towed vehicle directly above the area where chains are mounted on tow dolly. Allow slight slack in the chains to provide for suspension movement on the towed vehicle.

12. Disconnect the drive shaft on the towed vehicle if rear-wheel or four-wheel drive. Consult your dealer if you are uncertain of above. **TOWING ABOVE VEHICLE WITHOUT DISCONNECTING DRIVE SHAFT WILL DAMAGE TOWED VEHICLE'S TRANSMISSION EVEN IF TRANSMISSION IS PLACED IN NEUTRAL.**

13. Release parking brake on towed vehicle and be sure the steering is LOCKED in the straight position. The towed vehicle must have lockable steering. Remove keys from ignition and lock vehicle.

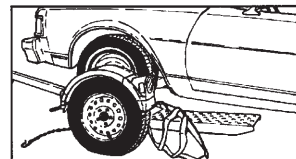
14. Check the towing system after hook-up, tow about 100 feet, then stop and perform a safety check. Check the bolts, chains, coupler, ramps, tire straps, and other items to make sure they are in the right position and secure. Repeat the safety check after the first 5 miles and then every 50 miles thereafter.

15. Towed vehicle is now safely connected and ready to be towed.

CHECK THE TOW DOLLY BOLTS, COUPLER, SAFETY CHAINS, ELECTRICAL HOOK-UP, AND TIRE STRAPS AFTER 100 FEET AFTER THE FIRST 5 MILES OF TRAVEL, AND THEN EVERY 50 MILES THEREAFTER. DO NOT EXCEED 45 MILES PER HOUR OR ANY LOWER POSTED SPEED LIMIT.

UNLOAD TOWED VEHICLE FROM TOW DOLLY

1. Park towing vehicle and tow dolly straight and on level ground. Apply parking brake of towing vehicle.
2. Fully apply towed vehicle parking brake.
3. Install drive shaft on rear-wheel or four-wheel drive towed vehicle.



4. Remove wheel straps and safety chains from towed vehicle.
5. Release tow dolly platform locking pin.
6. Release parking brake on towed vehicle.
7. SLOWLY back towed vehicle off of tow dolly to prevent bottom of vehicle from contacting ramps.

CHECK TRANSMISSION FLUID LEVEL ON TOWED VEHICLE IF DRIVE SHAFT WAS REMOVED AS FLUID MAY HAVE LEAKED OUT DURING TOWING.

8. Return tow dolly platform to the up position and engage locking pin.
9. Take up excess slack on tow dolly straps in ratchet assembly.
10. Store all safety chains in storage position.
11. Wrap tow dolly electrical wires around tow dolly tongue handle.

DD21012, Rev 0 06/10/96

TOW DOLLY LOAD LIMITATIONS

Read Tow Dolly Instructions Before Loading

Maximum Tire Tread Width: 42" Min. - 76" Max.

Maximum Towed Vehicle Weight:

Front Wheel Drive 4,500 lbs.(GT300SB)

Rear Wheel Drive 4,800 lbs.(GT300SB)

or Four-Wheel Drive

-Vehicle must be centered with front end on tow dolly facing forward.

-Vehicles with low front end or air dams may not have enough ground clearance to drive up on tow dolly platform.

-Vehicle must have lockable steering.

-Rear-wheel or four-wheel drive vehicles must have drive shaft disconnected.

-Do not tow mid or rear engine mounted vehicles

-Towed vehicles must not be loaded with possessions, people, pets, etc.

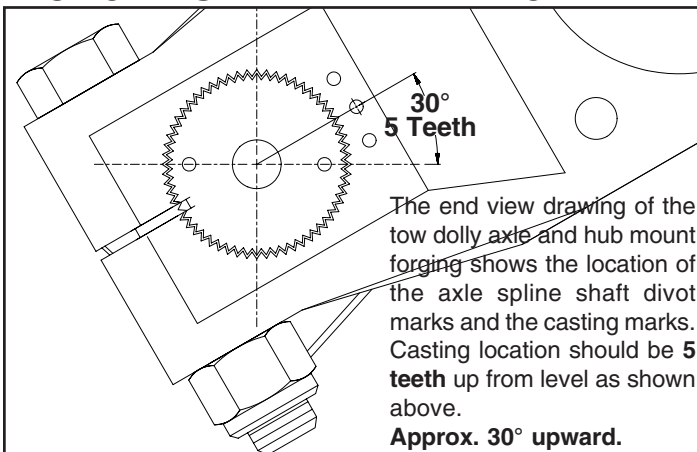
DO NOT EXCEED 55 MILES PER HOUR OR ANY LOWER POSTED SPEED LIMIT.

BACKING UP

The tow dolly is not a trailer and cannot be backed up because it swivels both at the coupler and car platform. If you must back up, unload car first, disconnect the coupler, and move car and dolly separately.

Play It Safe: Park where you can pull out going forward.

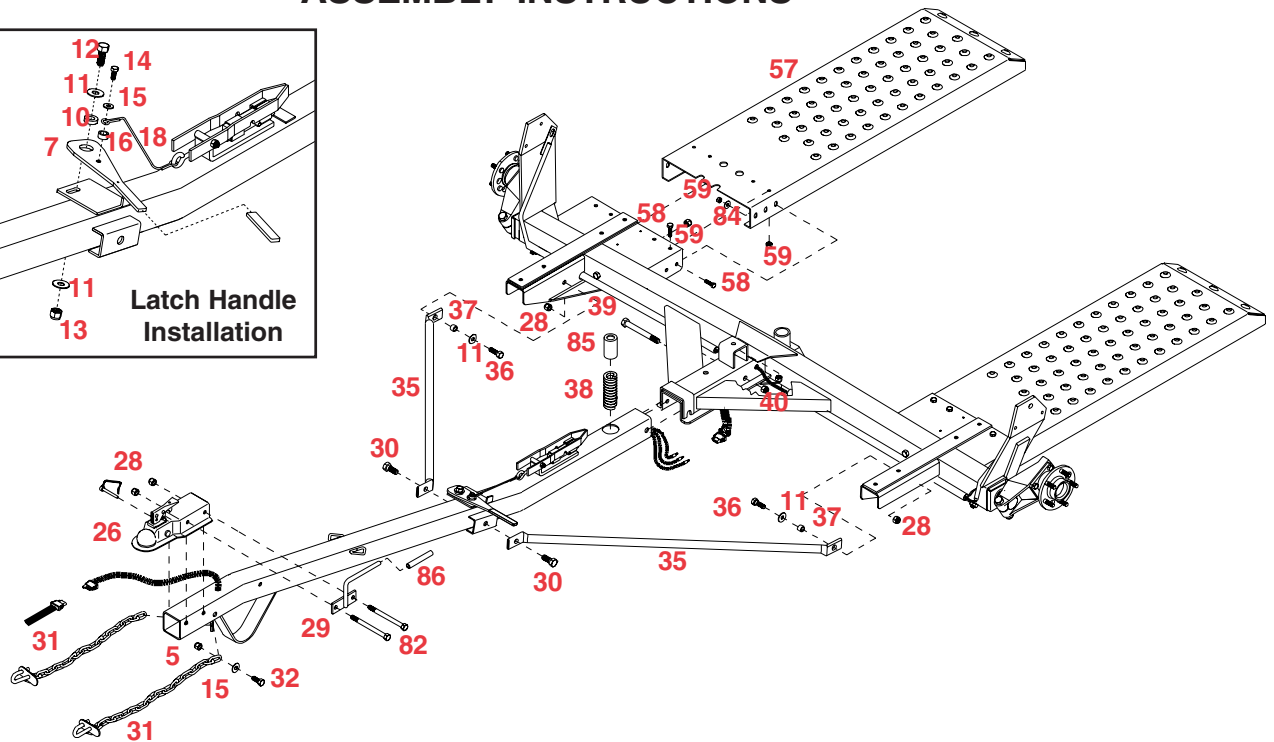
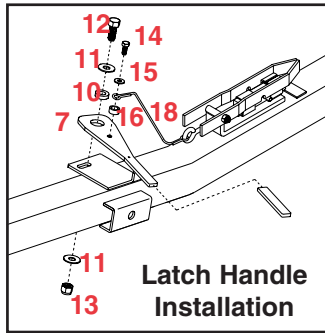
FORGED SPINDLE ARM ALIGNMENT



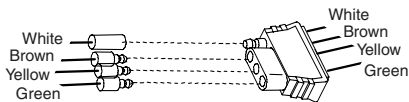
The end view drawing of the tow dolly axle and hub mount forging shows the location of the axle spline shaft divot marks and the casting marks. Casting location should be 5 teeth up from level as shown above.

Approx. 30° upward.

ASSEMBLY INSTRUCTIONS



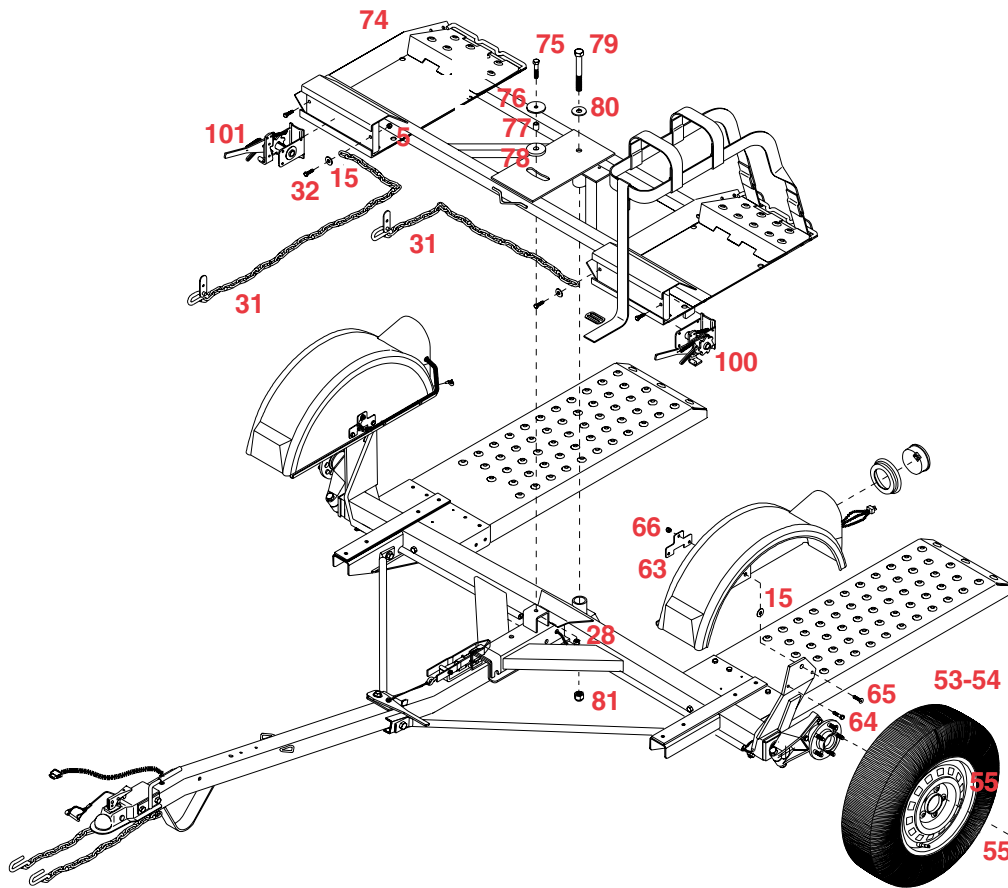
1. Remove top platform to expose mainframe. Place the main frame on blocks or some other sturdy support so that the frame rests approximately 8"-10" off the ground.
2. Hold the tongue (#25) up to the front of the tow dolly and plug the bullet connectors extending out the back of the tongue into the connector protruding from under the mainframe channel.



3. Mount the tongue to the front of the tow dolly using one 5/8" x 4-1/2" grade 5 bolt (#39) and locknut (#40) (torque to 50 ft. lbs.). Do not torque over 50 ft. lbs. or the bed will not tilt. Tilt the undercarriage back so the Tilt Bed Spring (#38) and Spring Sleeve (#85) can be inserted into the tongue. It is recommended that the top of the spring be continually pressed toward the rear of the unit during the latching process. Make sure the tongue latch is in the latched position to the tilt bed.
4. Mount the latch handle (#7) to the mounting plate using the 1/2" x 1-1/4" grade 5 bolt (#12), two 1/2" flatwashers (#11), bushing (#10), and 1/2" locknut (#13). Put stainless steel bushing (#16) into latch cable (#18) and secure to handle using 3/8" x 3/4" grade 5 bolt (#14) and 5/16" flatwasher (#15). Adjust latch so cable is snug by loosening bolt and nut and sliding handle forward or back in slot in mounting plate.
5. Secure the Coupler (#26) and lift handle (#29) to the front end of the tongue with two 1/2" x 4-1/2" gr.5 bolts (#82) and locknuts (#28). Torque the locknuts to 75 - 80 ft. lbs.
6. Attach the two 36" transport safety chains (#31) to the two holes in the angle located under the tongue using two 7/16" x 1-1/4" grade 5 bolts (#32), flatwashers (#15), and locknuts (#5). Torque bolts to 50 ft. lbs. Attach the ramps

(#57) as shown using twenty 7/16"-20UNF x 3/4" grade 8 bolts (#58) and Bi-Way lock nuts (#59). Bolts on top of the ramp must be inserted from the topside for clearance. Torque the 7/16" bolts to 80 ft. lbs.

7. Lay the bracing struts (#35) out along the tow dolly tongue with the back end (the end with the larger hole) toward the mainframe. Loosely bolt the back of each bracing strut to the dolly frame as shown using 1/2" x 1-1/2" grade 5 bolt (#36), flatwasher (#11), pivot bushing (#37) and locknut (#28). Hold up the front end (the end with the smaller hole) of each bracing strut to the tongue and secure with two 5/8" x 1-1/2" hex head epoxied bolt (#30). Torque the 1/2" x 1-1/2" bolt with the pivot bushing to 75 ft. lbs. Torque the two 5/8" x 1-1/2" serrated head bolts to 100 ft. lbs.
8. Replace the top platform (#74) and attach using one 3/4" x 6" grade 5 bolt (#79), 3/4" flatwasher (#80) and 3/4" locknut (#81). Attach the wear washer using one 1/2" x 2-1/4" grade 5 bolt (#75), special washer (#76), top pivot bushing (#77), plastic washer (#78), and 1/2" locknut (#28).
9. Remove the 7/16" x 1-1/4" bolt (#32), 3/8" flatwasher (#15) and locknut (#5) from the front of each wheel platform tire stop. Slide the ratchet winch (#100 & 101) into the channel at the front of the wheel platforms as shown. Attach two 36" long towed vehicle safety chains (#31). Secure one chain to each wheel platform tire stop with the flatwasher, 7/16" x 1-1/4" bolt and locknut that was removed previously.
10. Bolt each fender on using two 3/8" x 1-1/2" gr. 5 bolts (#64), one 3/8" x 1-1/2" gr. 5 flat head socket drive bolt (#65), one backup plate (#63), 3/8" flatwasher (#15) and locknuts (#66) in each fender. Mount the fender with the light pocket to the rear.



NOTE: It is advantageous to wire the fender lights prior to attaching the wheels.

11. Fish the three wires from main unit through the hole in fender.
12. On the left side, plug in bullet plugs with white to white, black to brown and yellow to red. On the right side, plug white to white, black to brown and green to red.
13. With a pliers, install two wire clamps on fender. From rear of fender lip, install one clamp at 5-1/2" and one at 8".
14. Attach the wheels (#53-54) to the mainframe. Use the supplied lug nuts (#55) and torque to 120 ft. lbs. them forward.

WIRING OF THE TOWING VEHICLE

Connect the wiring to the towing vehicle keeping in mind the color code indicated below.

1. Make certain the towing vehicle lights are "OFF".
2. Connect YELLOW wire to left turn signal and stop wire in the left rear of towing vehicle with the wire splicer (01883) supplied.
3. Connect GREEN wire to the right turn signal and stop wire.
4. Connect BROWN wire to taillight wire.
5. VERY IMPORTANT - connect WHITE wire to frame of body of towing vehicle. This is the common ground and a clean metal-to-metal contact must be made.

CAUTION: Many flashers for vehicle turn signals will not carry the additional load of tow dolly turn signals. If normal operation does not occur when connected to the tow dolly, a heavy duty replacement flasher may be obtained through an auto parts outlet store.

TESTING CIRCUITRY

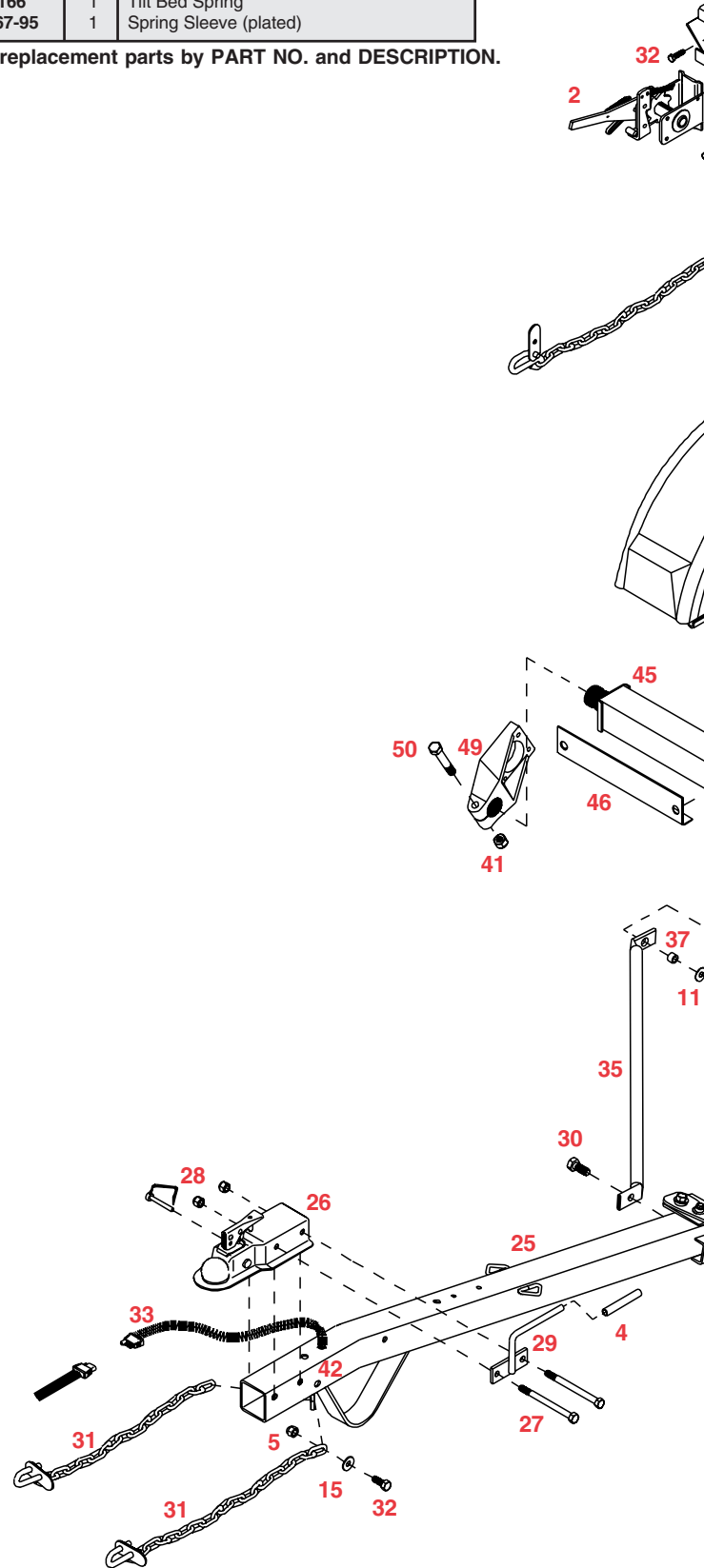
1. Check that the WHITE (ground) wire is connected to the frame of the towing vehicle.
2. With headlights in "ON" position, the taillights should be lighted.
3. Start engine and have someone depress brake pedal. Brake lights of the tow dolly and towing vehicle should come "on" and "off" simultaneously with each application.
4. Put left turn signal on. Left turn light of tow dolly and towing vehicle should flash simultaneously. Should the turn signal light of the tow dolly function opposite to those of the towing vehicle, it is probable that the YELLOW and GREEN wires have been reversed. Check the plug connection under the tongue of the tow dolly to make sure wire colors are not crossed at that point. If this plug connection is correct, correct problem by reversing yellow and green wire connection on the towing vehicle.

RENT-A-KADDY TORSION TOW DOLLY PARTS BREAKDOWN

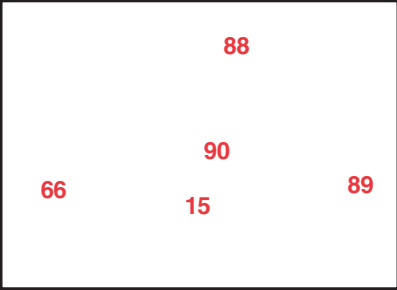
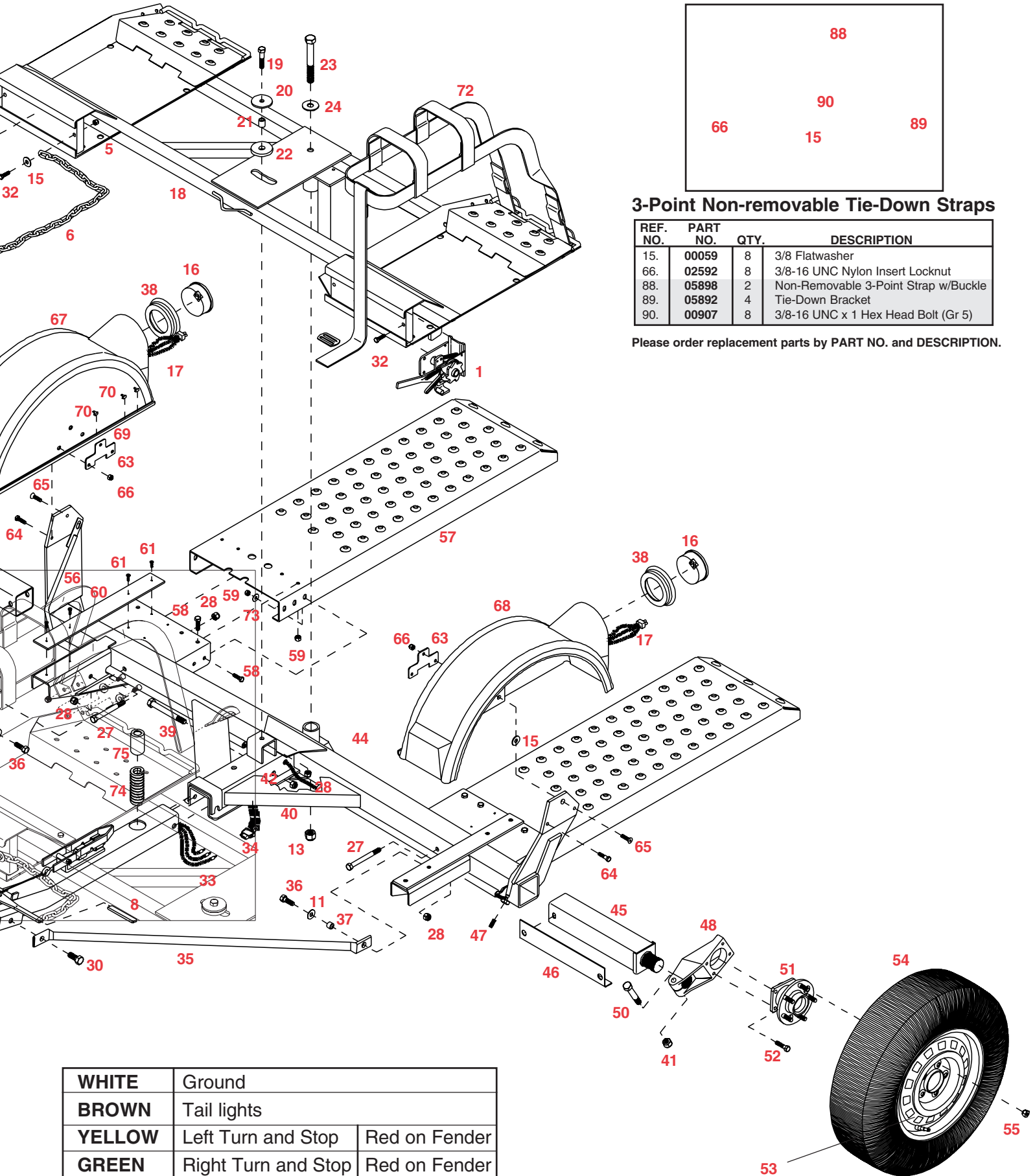
REF. NO.	PART NO.	QTY.	DESCRIPTION
1.	5432	1	Left Ratchet Winch
2.	5433	1	Right Ratchet Winch
3.	01897	1	1/2"-13UNC x 3-1/2" Hex Head Bolt (Gr.5)
4.	02189	1	Hand Grip
5.	02771	6	7/16"-14 UNC Nylon Insert Locknut
6.	02383	2	36" Safety Chain with hook
-	04194	-	7/16" "S" Hook for safety chains
7.	03574-95	1	Latch Handle (plated)
8.	02243	1	Black Vinyl Hand Grip
9.	03381-95	1	Latch Catch (plated)
10.	03382-95	1	Handle Bushing (plated)
11.	00085	4	1/2" Flatwasher
12.	00967	1	1/2"-13UNC x 1-1/4" Hex Head Bolt (Gr.5)
13.	02961	1	3/4"-10UNC Nylon Insert Locknut
14.	05444	1	3/8"-16 UNC x 3/4" Epoxied Hex Bolt (Gr. 5)
15.	00059	6	3/8" Flatwasher
16.	05446	2	Sealed Round Tail light
17.	07081	2	3-Way Plug Pigtail (Tail light)
18.	12049-96	1	Top Platform (galvanized)
19.	00348	1	1/2"-13UNC x 2-1/4" Hex Hd. Bolt (Gr.5)
20.	02578-95	1	Metal Pivot Washer (plated)
21.	00698-95	1	Top Pivot Bushing (plated)
22.	03370	1	UHMW Pivot Washer
23.	00638	1	3/4"-10UNC x 6" Hex Hd. Bolt (Gr.5)
24.	00492	1	3/4" Flatwasher
25.	03769-96	1	Tongue (galvanized)
26.	11962-95	1	Coupler
27.	01338	4	1/2"-13UNC x 4-1/2" Hex Head Bolt (Gr.5)
28.	02178	10	1/2"-13UNC Nylon Insert Locknut
29.	02288-95	1	Lift Handle (units without brakes) (plated)
-	04017-95	1	Lift Handle (units with brakes) (plated)
30.	03503	2	5/8"-11UNC x 1-1/4" Hex Hd. Epoxied Bolt(Gr.5)
31.	01853	2	24" Safety Chain with Hook
32.	01898	6	7/16"-14UNC x 1-1/4" Hex Head Bolt (Gr.5)
33.	11590	1	Wiring Harness (Front Half)
34.	11591	1	Wiring Harness (Rear Half)
35.	03394-96	2	Bracing Strut (8'-3" wide unit) (galvanized)
36.	01254	2	1/2"-13UNC x 1-1/2" Hex Head Bolt (Gr.5)
37.	02579-95	2	Pivot Bushing (plated)
38.	05447	2	Rubber Mounting Grommet for light
39.	02434	1	5/8"-11UNC x 4-1/2" Hex Head Bolt (Gr.5)
40.	02587	1	5/8"-11UNC Nylon Insert Locknut
41.	05933	2	5/8"-18UNF Nylon Insert Locknut
42.	01863	3	5/8" Grommet
43.	00078	2	7/16" Lockwasher
44.	12068-96	1	Undercarriage (galvanized)
45.	03366	2	Cartridge Insert
46.	03368	2	Thin Cartridge Shim
47.	03500	4	1/2"-13UNC x 1" Socket Hd. Set Screw
48.	03293	1	Forged Arm (Left Side)(W/Brake Line Mount)
49.	03359	1	Forged Arm (Right Side)(W/Brake Line Mnt.)
-	09870	2	Forged Arm Without Brake Line Mount
50.	05932	2	5/8"-18UNF x 3-3/4" Hex Hd. Bolt (Gr.8)
51.	04369	2	Hub (5 on 115mm Bolt Cricle)
-	02917	-	Replacement 12mm x 1.5 Stud Bolt
52.	02377	8	7/16"-20UNF x 1-1/2" Epoxied Hex Bolt (Gr.8)
53.	09296	2	14" x 5.5" Rim (5 on 115mm Bolt Circle)
54.	04826	2	ST205/75R 14" x "C" Radial Tire
55.	02213	10	12mm zinc Lug Nut
56.	03665-95	1	Right Upright Wire Protector Tube (plated)
-	03662-95	1	Left Upright Wire Protector Tube (plated)
57.	07092-96	2	48" Ramp (galvanized)
58.	03525	20	7/16"-20UNF x 3/4" Hex Head Bolt (Gr.8)
59.	03724	20	7/16"-20UNF Hex Punch Locknut
60.	03377	2	Wearplate (four hole)
61.	07082	8	1/4"-20 UNC x 1" Flat Hd Torx Cap Screw
62.	02772	8	1/4" Nylon Insert Locknut
63.	04424-95	2	Back-Up Plate for Fender (plated)
64.	00914	4	3/8"-16UNC x 1-1/2" Hex Head Bolt (Gr.5)
65.	03526	2	3/8"-16UNC x 1-1/2" Flat Hex Head Socket Bolt
66.	02592	14	3/8"-16UNC Nylon Insert Locknut
67.	12102	1	Right Poly Fender
68.	12101	1	Left Poly Fender
69.	02298	2	22-1/2" Wire Loom
70.	04425	8	Wire Retaining Clip
71.	05447	2	Rubber Mounting Grommet for light
72.	03528	2	Removable 3-point Strap
-	02729-95	2	Buckle only (plated)
73.	00205	12	7/16" Flatwasher
-	04508	2	Amber Fender Reflector (not shown)
-	04804	2	Red Fender Reflector (not shown)

REF. NO.	PART NO.	QTY.	DESCRIPTION
-	01883	9	Electrical Wire Splicer (not shown)
-	05443	2	Cable Hanger for Wire Harness (not shown)
-	04944	2	Strain Relief (not shown)
-	61379	-	Wire Loom
-	5452	1	Tilt Bed Spring and Sleeve Assembly
74.	07166	1	Tilt Bed Spring
75.	07167-95	1	Spring Sleeve (plated)

Please order replacement parts by PART NO. and DESCRIPTION.



MODELS GT300 & GT300SB



3-Point Non-removable Tie-Down Straps

REF. NO.	PART NO.	QTY.	DESCRIPTION
15.	00059	8	3/8 Flatwasher
66.	02592	8	3/8-16 UNC Nylon Insert Locknut
88.	05898	2	Non-Removable 3-Point Strap w/Buckle
89.	05892	4	Tie-Down Bracket
90.	00907	8	3/8-16 UNC x 1 Hex Head Bolt (Gr 5)

Please order replacement parts by PART NO. and DESCRIPTION.

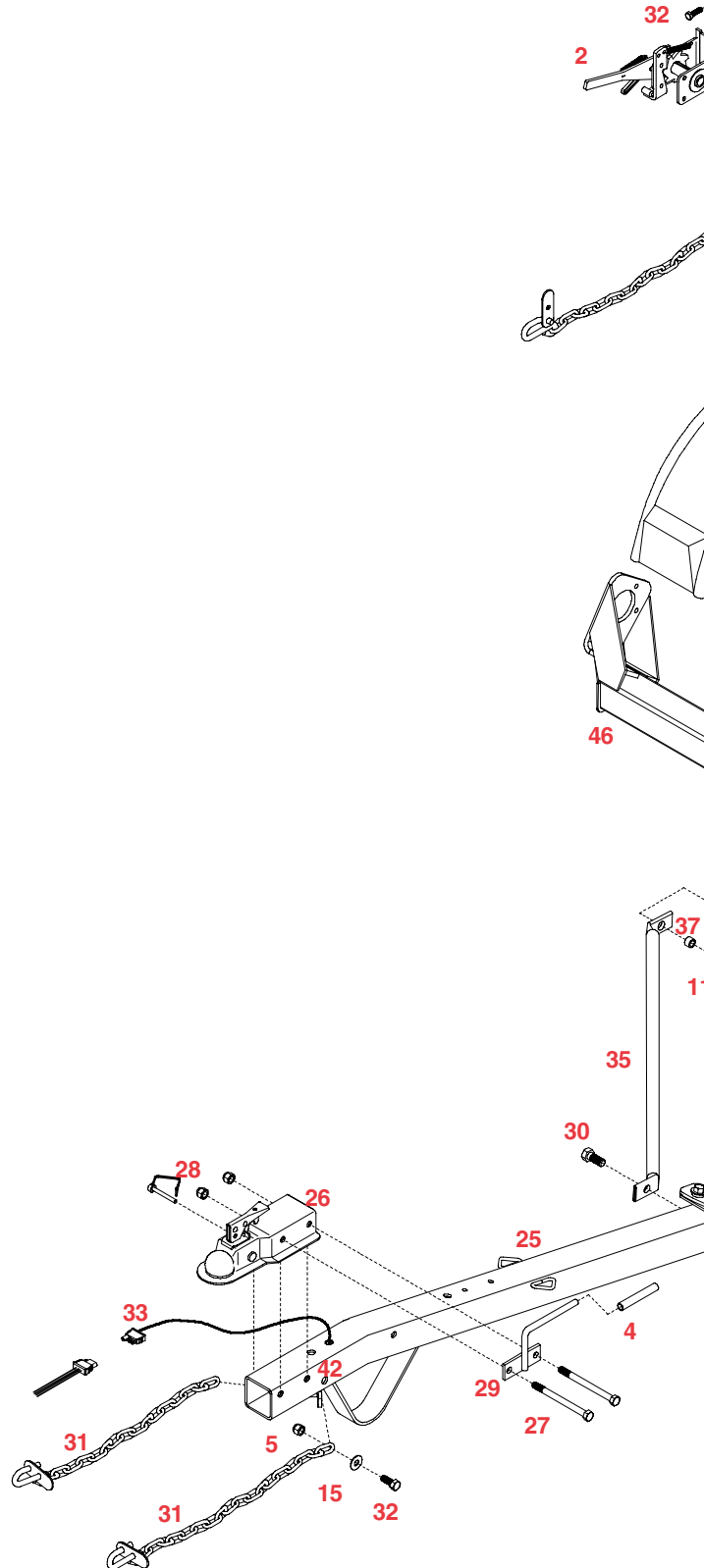
WHITE	Ground	
BROWN	Tail lights	
YELLOW	Left Turn and Stop	Red on Fender
GREEN	Right Turn and Stop	Red on Fender

RENT-A-KADDY TOW DOLLY PARTS BREAKDOWN

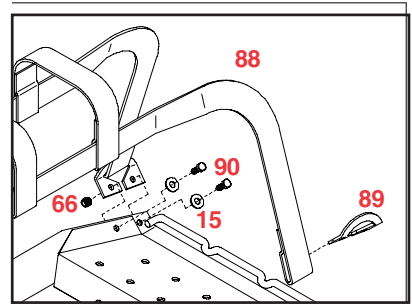
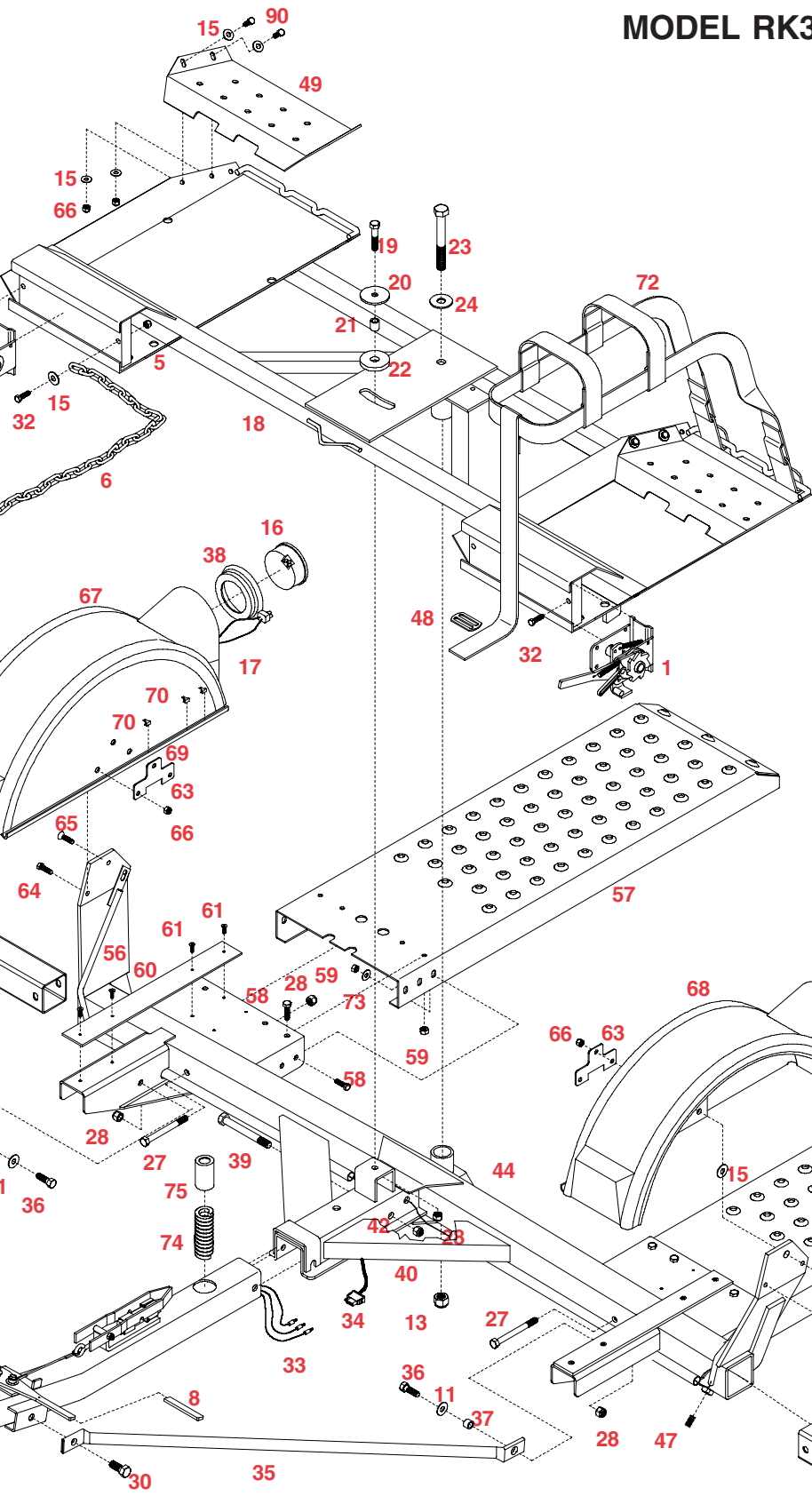
REF. NO.	PART NO.	QTY.	DESCRIPTION
1.	5432	1	Left Ratchet Winch
2.	5433	1	Right Ratchet Winch
3.	01897	1	1/2"-13UNC x 3-1/2" Hex Head Bolt (Gr.5)
4.	02189	1	Hand Grip
5.	02771	6	7/16"-14 UNC Nylon Insert Locknut
6.	02383	2	36" Safety Chain with hook
-	04194	-	7/16" "S" Hook for safety chains
7.	03574-95	1	Latch Handle (plated)
8.	02243	1	Black Vinyl Hand Grip
9.	03381-95	1	Latch Catch (plated)
10.	03382-95	1	Handle Bushing (plated)
11.	00085	4	1/2" Flatwasher
12.	00967	1	1/2"-13UNC x 1-1/4" Hex Head Bolt (Gr.5)
13.	02961	1	3/4"-10UNC Nylon Insert Locknut
14.	05444	1	3/8"-16 UNC x 3/4" Epoxied Hex Bolt (Gr. 5)
15.	00059	6	3/8" Flatwasher
16.	05446	2	Sealed Round Tail light
17.	07081	2	3-Way Plug Pigtail (Tail light)
18.	12085-80	1	Top Platform (galvanized)
19.	00348	1	1/2"-13UNC x 2-1/4" Hex Hd. Bolt (Gr.5)
20.	02578-95	1	Metal Pivot Washer (plated)
21.	00698-95	1	Top Pivot Bushing (plated)
22.	03370	1	UHMW Pivot Washer
23.	00638	1	3/4"-10UNC x 6" Hex Hd. Bolt (Gr.5)
24.	00492	1	3/4" Flatwasher
25.	03769-96	1	Tongue (galvanized)
26.	11962-95	1	Coupler
27.	01338	4	1/2"-13UNC x 4-1/2" Hex Head Bolt (Gr.5)
28.	02178	10	1/2"-13UNC Nylon Insert Locknut
29.	02288-95	1	Lift Handle (units without brakes) (plated)
-	04017-95	1	Lift Handle (units with brakes) (plated)
30.	03503	2	5/8"-11UNC x 1-1/4" Hex Hd. Epoxied Bolt(Gr.5)
31.	01853	2	24" Safety Chain with Hook
32.	01898	6	7/16"-14UNC x 1-1/4" Hex Head Bolt (Gr.5)
33.	11590	1	Wiring Harness (Front Half)
34.	11591	1	Wiring Harness (Rear Half)
35.	03394-96	2	Bracing Strut (8'-3" wide unit) (galvanized)
36.	01254	2	1/2"-13UNC x 1-1/2" Hex Head Bolt (Gr.5)
37.	02579-95	2	Pivot Bushing (plated)
38.	05447	2	Rubber Mounting Grommet for light
39.	02434	1	5/8"-11UNC x 4-1/2" Hex Head Bolt (Gr.5)
40.	02587	1	5/8"-11UNC Nylon Insert Locknut
41.	02209	8	7/16" UNF Nylon Insert Locknut
42.	01863	3	5/8" Grommet
43.	00078	2	7/16" Lockwasher
44.	12068-80	1	Undercarriage
45.	11204-80	1	Right Axle
46.	11203-80	1	Left Axle
47.	03500	4	1/2"-13UNC x 1" Socket Hd. Set Screw
48.	02729-95	2	Buckle only (plated)
49.	03388-80	2	Rear Tire Stop
50.	02917	-	Replacement 12mm x 1.5 Stud Bolt
51.	04369	2	Hub (5 on 115mm Bolt Circle)
52.	02210	8	7/16"-20UNF x 1-1/4" Epoxied Hex Bolt (Gr.8)
53.	09296	2	14" x 5.5" Rim (5 on 115mm Bolt Circle)
54.	04826	2	ST205/75R 14" x "C" Radial Tire
55.	02213	10	12mm zinc Lug Nut
56.	03665-95	1	Right Upright Wire Protector Tube (plated)
-	03662-95	1	Left Upright Wire Protector Tube (plated)
57.	07092-96	2	48" Ramp (galvanized)
58.	03525	20	7/16"-20UNF x 3/4" Hex Head Bolt (Gr.8)
59.	03724	20	7/16"-20UNF Hex Punch Locknut
60.	03377	2	Wearplate (four hole)
61.	07082	8	1/4"-20 UNC x 1" Flat Hd Torx Cap Screw
62.	02772	8	1/4" Nylon Insert Locknut
63.	04424-95	2	Back-Up Plate for Fender (plated)
64.	00914	4	3/8"-16UNC x 1-1/2" Hex Head Bolt (Gr.5)
65.	03526	2	3/8"-16UNC x 1-1/2" Flat Hex Head Socket Bolt
66.	02592	14	3/8"-16UNC Nylon Insert Locknut
67.	12102	1	Right Poly Fender
68.	12101	1	Left Poly Fender
69.	02298	2	22-1/2" Wire Loom
70.	04425	8	Wire Retaining Clip
71.	05447	2	Rubber Mounting Grommet for light
72.	03528	2	Removable 3-point Strap
73.	00205	12	7/16" Flatwasher
-	04508	2	Amber Fender Reflector (not shown)
-	04804	2	Red Fender Reflector (not shown)
-	01883	9	Electrical Wire Splicer (not shown)
-	05443	2	Cable Hanger for Wire Harness (not shown)
-	04944	2	Strain Relief (not shown)
-	61379	-	Wire Loom

REF. NO.	PART NO.	QTY.	DESCRIPTION
-	5452	1	Tilt Bed Spring and Sleeve Assembly
74.	07166	1	Tilt Bed Spring
75.	07167-95	1	Spring Sleeve (plated)

Please order replacement parts by PART NO. and DESCRIPTION.



MODEL RK300

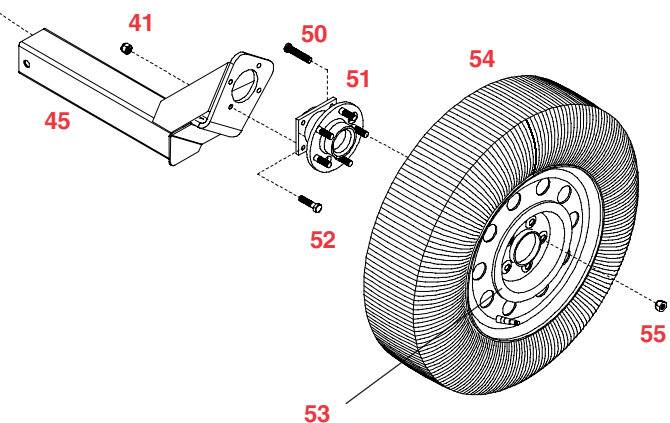


3-Point Non-removable Tie-Down Straps

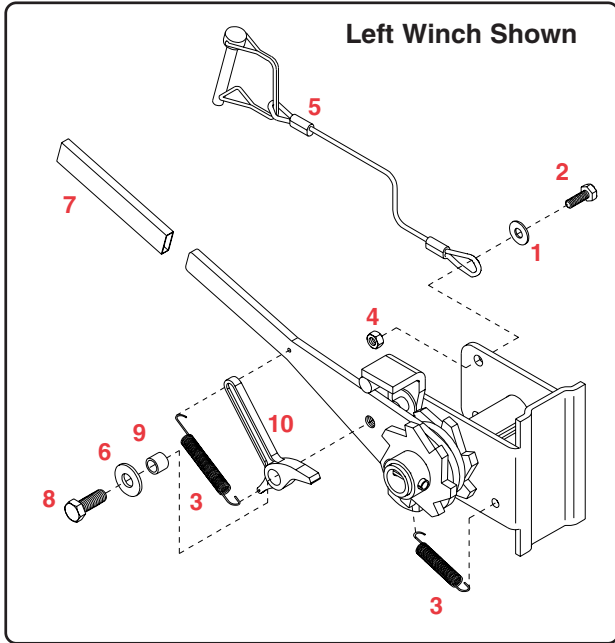
REF. NO.	PART NO.	QTY.	DESCRIPTION
15.	00059	8	3/8 Flatwasher
66.	02592	8	3/8-16 UNC Nylon Insert Locknut
88.	05898	2	Non-Removable 3-Point Strap w/Buckle
89.	05892	4	Tie-Down Bracket
90.	00907	8	3/8-16 UNC x 1 Hex Head Bolt (Gr 5)

Please order replacement parts by PART NO. and DESCRIPTION.

WHITE	Ground	
BROWN	Tail lights	
YELLOW	Left Turn and Stop	Red on Fender
GREEN	Right Turn and Stop	Red on Fender



WINCH ASSEMBLY

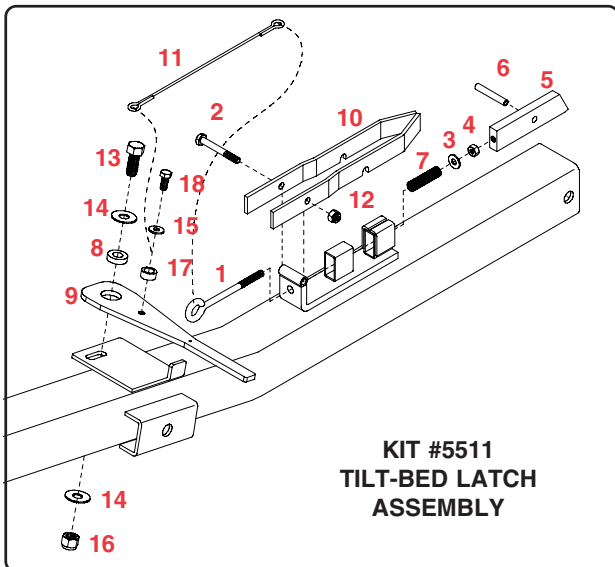


WINCH ASSEMBLY PARTS LIST

-	5432	-	Left Winch Assembly
-	5433	-	Right Winch Assembly
1.	00214	1	1/4" Flat Washer
2.	01076	1	1/4"-20 UNC x 3/4" Hex Head Bolt
3.	01864	2	Spring
4.	02772	2	1/4"-20 UNC Nylon Insert Locknut
5.	05337	1	Lock Pin w/ Cable
6.	00004	2	5/16" Flat Washer
7.	02243	1	Black Vinyl Hand Grip
8.	05444	1	3/8"-16 UNC x 3/4" Hex Head Bolt w/ Epoxy
9.	05449	1	Winch Pawl Bushing (Stainless Steel)
10.	05450	1	Winch Pawl

Please order replacement parts by **PART NO.** and **DESCRIPTION.**

TILT-BED LATCH ASSEMBLY



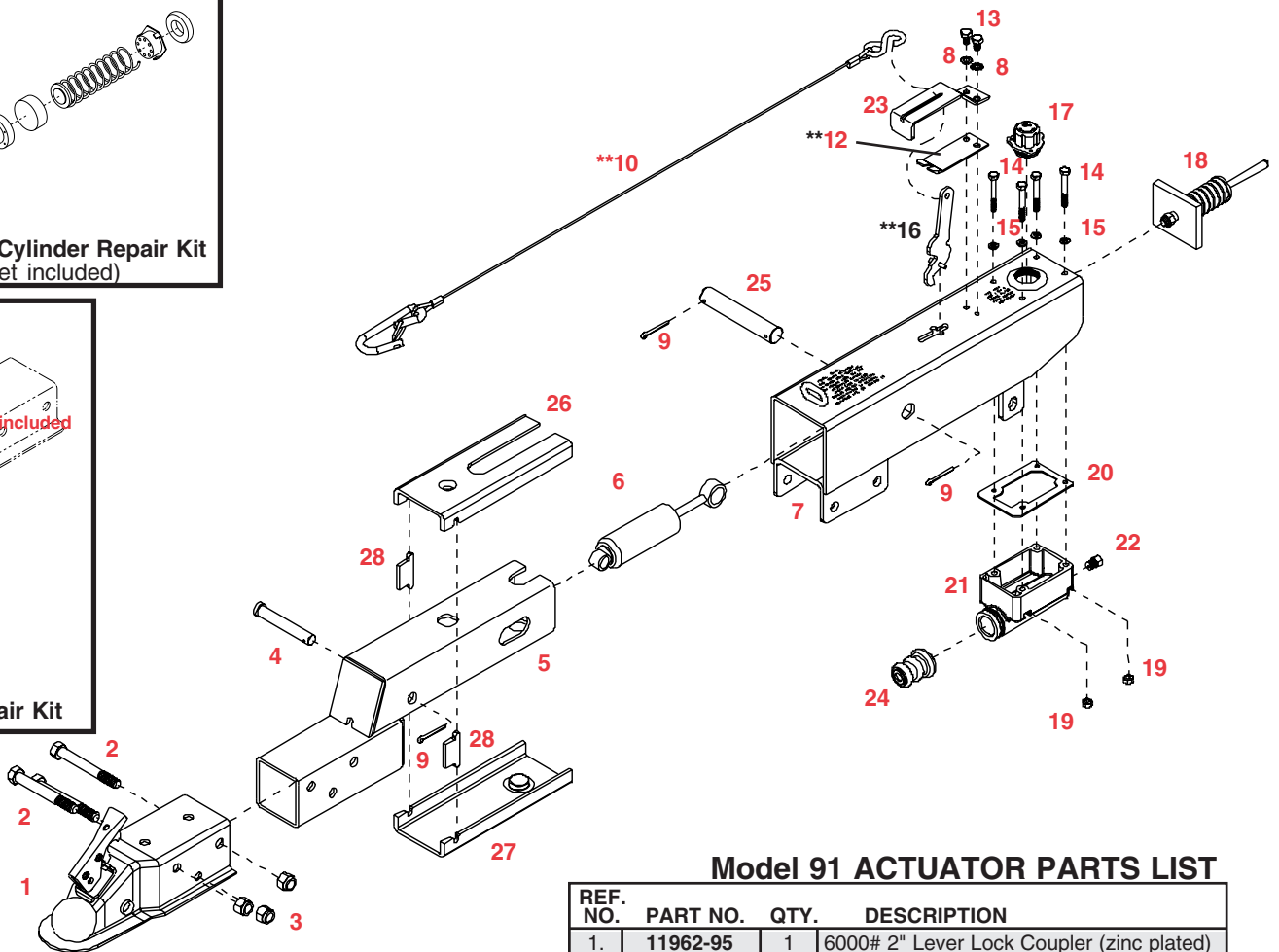
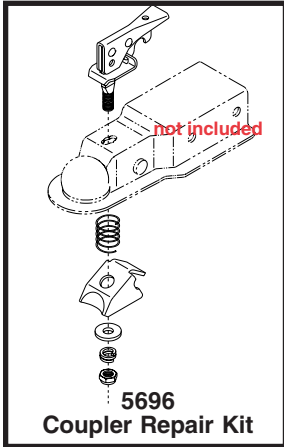
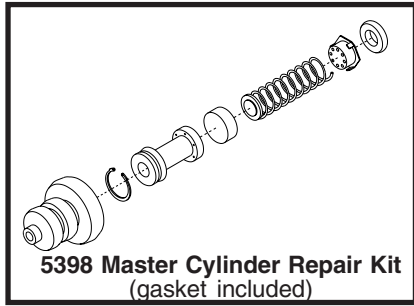
TILT-BED LATCH ASSEMBLY PARTS LIST

REF. NO.	PART NO.	QTY.	DESCRIPTION
	5511	-	Tilt-Bed Latch Kit
1*	03434	1	5/16"-18 UNC x 4" Eye Bolt
2*	04221	1	5/16"-18 UNC x 2-1/2 Hex Head Bolt (Gr 5)
3*	00004	1	5/16" Flatwasher
4*	00007	1	5/16"-18 UNC Hex Nut
5*	03379-95	1	Latch Block
6*	03435	1	Roll Pin (5/16" x 2-1/4")
7*	03499	1	Latch Spring - Stainless Steel
8.	03382-95	1	Latch Handle Pivot Bushing
9.	03574-95	1	Latch Handle
10.	03381-95	1	Latch Catch
11.	03433	1	Latch Cable
12.	02802	1	5/16"-18 UNC Nylon Insert Locknut
13.	00967	8	1/2"-13UNC x 1-1/4" lg. Hex Head Bolt (gr.5)
14.	00085	1	1/2" Flatwasher
15.	00059	9	3/8" Flat Washer
16.	02178	13	1/2"-13UNC Nylon Insert Locknut
17.	05449	1	Spacer Bushing - Stainless Steel
18.	05444	1	3/8"-16 UNC x 3/4" Epoxied Hex Bolt (Gr 5)

Please order replacement parts by **PART NO.** and **DESCRIPTION.**

* Items included in 5511 kit

MODEL DA91 ACTUATOR PARTS BREAKDOWN



**2" Lever Lock Coupler
RATED AT 6000#**

BLEEDING THE SYSTEM

The first requirement for safe, sure hydraulic braking is the use of quality brake fluid. Use only DOT-3 or DOT-4 brake fluid from a sealed container.

If pressure bleeding equipment is available, follow the manufacturer's instruction in bleeding the system.

If system must be bled manually, proceed as follows: Fill master cylinder with fluid. Install bleeder hose on first wheel cylinder to be bled.

Have loose end of hose submerged in brake fluid in glass container to observe bubbling.

By loosening the bleeder screw located in the wheel cylinder one turn, the system is open to the atmosphere through the passage drilled in the screw. Pump actuator with long steady strokes. The bleeding operation is completed when bubbles no longer rise to the surface of the fluid. **Be sure to close bleeder screw securely.**

Repeat bleeding operation at each wheel cylinder. During the bleeding process, replenish the brake fluid, so the level does not fall below the 1/2 full level in the master cylinder reservoir. After bleeding is complete, make sure master cylinder reservoir is filled and filler cap is securely in place.

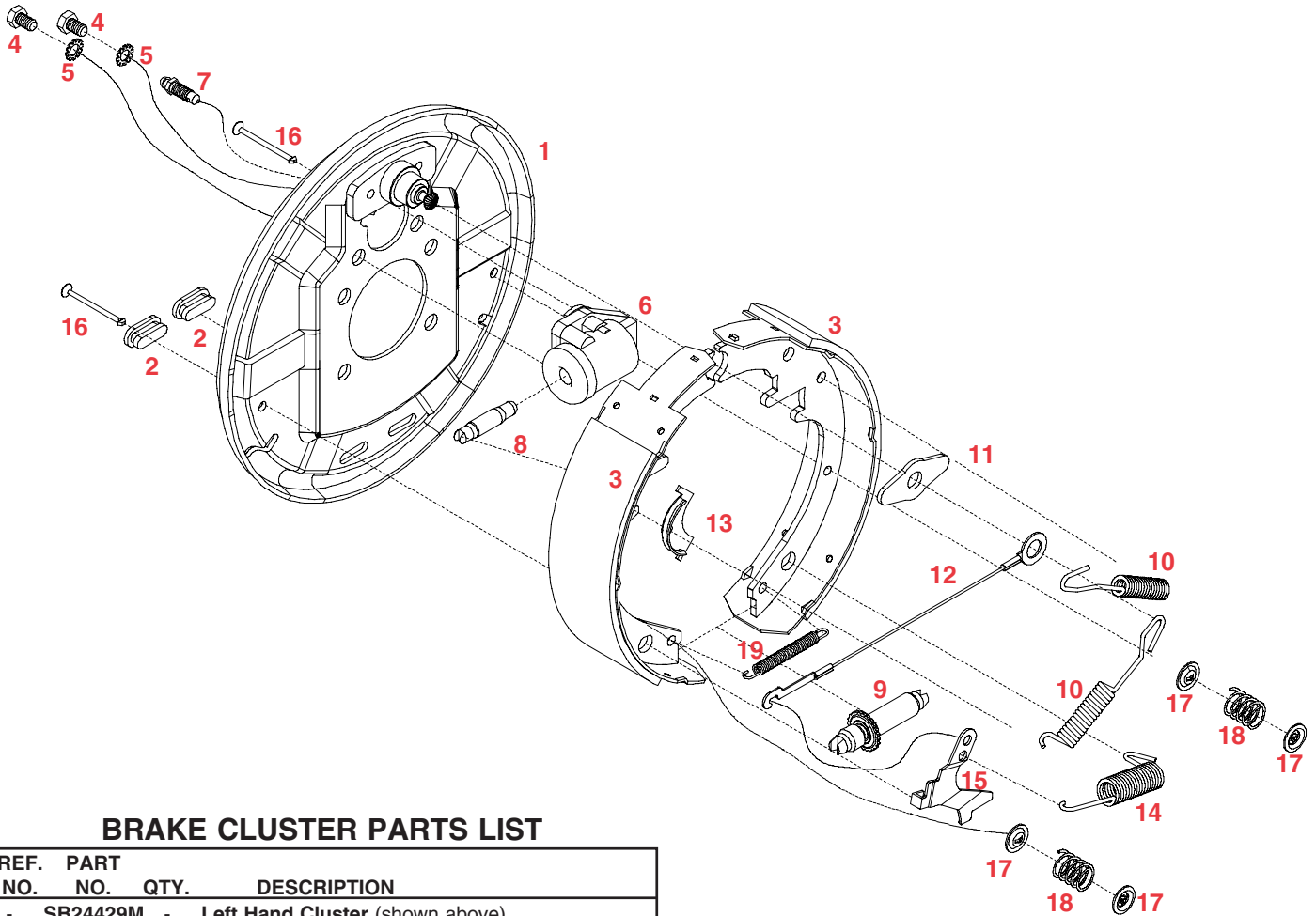
After the bleeding operation has been completed, apply pressure to the system and check the whole brake system for leaks.

Model 91 ACTUATOR PARTS LIST

REF. NO.	PART NO.	QTY.	DESCRIPTION
1.	11962-95	1	6000# 2" Lever Lock Coupler (zinc plated)
2.	01896	3	1/2"-13UNC x 4" Hex Head Bolt (gr.5)
3.	02178	3	1/2"-13UNC Nylon Insert Lock Nut
4.	05426	1	Front Shock Pin (drop tube actuators)
5.	11079-95	1	Drop Tube Actuator Slider (plated)
6.	SB12426	1	Damper/ Shock
7.	11164-95	1	3 Bolt Mount Outer Case (plated)
8.	05424	2	5/16" External Tooth Lock Washer
9.	02363	2	5/32" x 1 1/4 Cotter Pin(Qty 3 w/drop tube)
**10.	05408	1	3/32" Cable with hooks
**12.	05693-95	1	Emergency Lever Spring (plated)
13.	05961	2	5/16"-18UNC x 5/8" Hex Head Bolt (gr.5)
14.	00618	4	1/4-20UNC x 2" Hex Head Bolt (gr.5)
15.	00057	4	1/4" Lock Washer
**16.	05951	1	Emergency Lever Assembly
17.	03876	1	Master Cylinder Cap w/ Diaphragm & O-ring
-	05849	1	O-Ring Only (not shown)
18.	05977	1	Push Rod Assembly
19.	00062	4	1/4"-20 UNC Hex Nut
20.	09153	-	Plastic Master Cyl. Gasket ONLY
21.	10616	1	Master Cylinder
22.	SB12098	1	.018 Connector Orifice (Drum Brakes)
23.	03866-95	1	Lever Guide (plated)
24.	05687	1	Master Cylinder Protective Boot
25.	05986-95	1	Connecting Pin (plated)
26.	10965	1	Upper Slider
27.	10966	1	Lower Slider
28.	10967	2	Side Spacers
-	5401	-	Lever Replacement Kit (incl. items w/**)
-	5650	-	Master Cyl. Replacement Kit (drum)
-	5804	-	Coupler Repair Kit

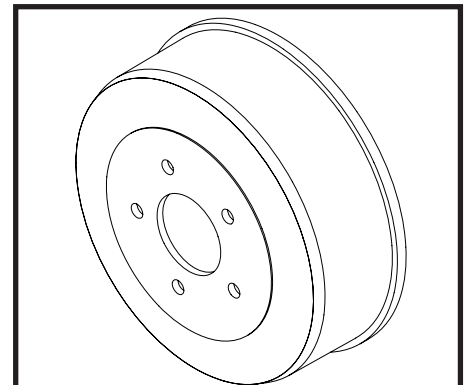
Please order replacement parts by **PART NO.** and **DESCRIPTION**

10" SELF-ADJUSTING BRAKE CLUSTER and DRUM PARTS BREAKDOWN

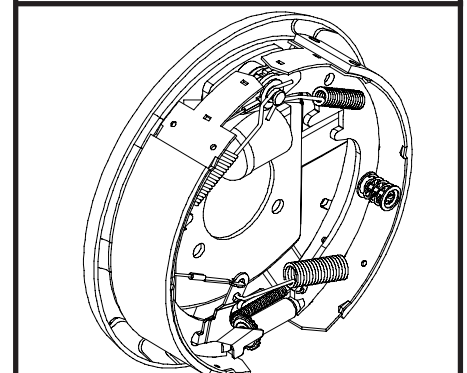


BRAKE CLUSTER PARTS LIST

REF. NO.	PART NO.	QTY.	DESCRIPTION
-	SB24429M	-	Left Hand Cluster (shown above)
-	SB24428M	-	Right Hand Cluster
1.	SB23871	1	Back Plate Assembly - (NDH Hub Mounting)
2.	SB9254	2	Cover Plate - Adjusting Hole
3.	SB10954	1	Brake Shoe Kit (includes 2 Primary & 2 Secondary)
4.	04305	2	5/16"-18UNC-Gr5 x 1/2" Hex Hd Bolt
5.	05424	2	5/16" External Tooth Washer
6.	SB9776	1	Wheel Cylinder Assembly - Right
-	SB9777	1	Wheel Cylinder Assembly - Left
7.	05431	1	Bleeder - replacement
8.	SB9783	1	Push Rod
9.	SB24047	1	Adjusting Screw Assembly - "R" (for LEFT cluster)
-	SB24048	1	Adjusting Screw Assembly - "L" (for RIGHT cluster)
10.	SB10958	2	Spring - Shoe
11.	SB10961	1	Shoe Guide
12.	SB23937	1	Cable
13.	SB23936	1	Cable Guide
14.	SB23724	1	Spring - Adjusting Screw
15.	05414	1	Lever - Left
-	05415	1	Lever - Right
16.	SB10959	2	Pin - Shoe Hold Down
17.	SB9789	4	Cup - Shoe Hold Down
18.	SB10960	2	Spring - Shoe Hold Down
19.	03880	1	Adjusting Screw Retaining Spring
-	SB15845	1	Wheel Cylinder Repair Kit (includes spring, cup and boot)
-	SB40929	2	10" Brake Drum



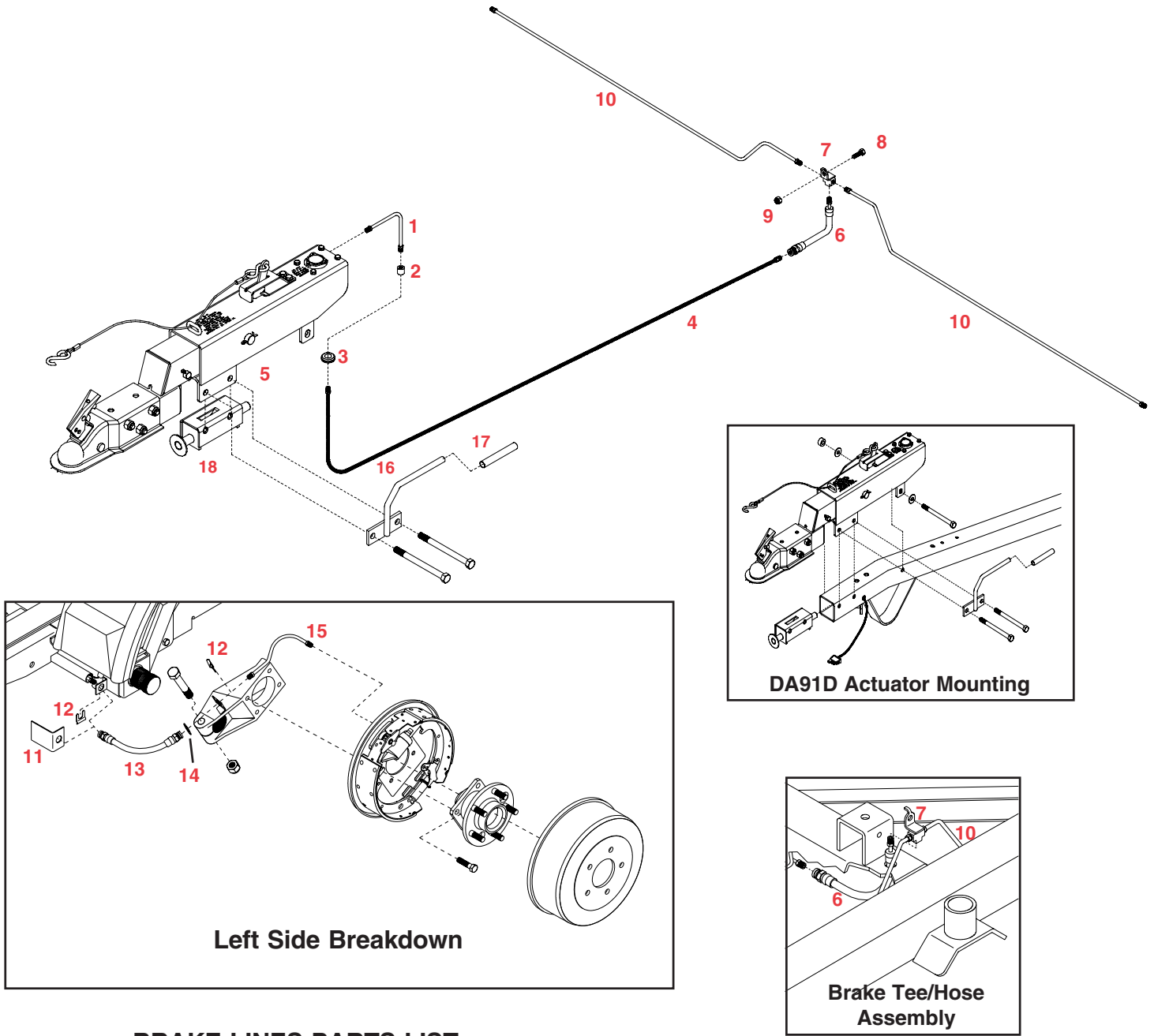
10" BRAKE DRUM



10" BRAKE CLUSTER

Please order replacement parts by PART NO. and DESCRIPTION.
Brake shoe kit can be ordered for one complete axle only.

BRAKE SYSTEM PARTS BREAKDOWN



BRAKE LINES PARTS LIST

REF. NO.	PART NO.	QTY.	DESCRIPTION
1.	SB5045	1	4-1/2" Brake Line
2.	SBD10	1	Brake Line Union
3.	01863	1	Rubber Grommet
4.	SB563	1	63" Brake Line (metal w/stone guard)
5.	02491	2	Spacer Bushing
6.	SB7H67	1	7" Rubber Brake Hose
7.	SB7785	1	3/16" Brake Tee
8.	01263	1	5/16-18 UNC x 3/4" Hex Head Bolt (Gr 5)
9.	02802	1	5/16-18 UNC Nylon Insert Locknut
10.	SB540	2	40" Brake Line (metal)
11.	03384	2	Brake Line/Hose Protector Plate
12.	SB7764	4	Retainer Clip
13.	SB7H66	2	7" Rubber Brake Hose
14.	01094	4	1" O.D. x 5/8" I.D. x 23 gauge Bushing
15.	SB508	2	8" Brake Line (metal)
16.	04017	1	Lift Handle
17.	02189	1	Hand Grip
18.	12445-30	1	Spring Return System

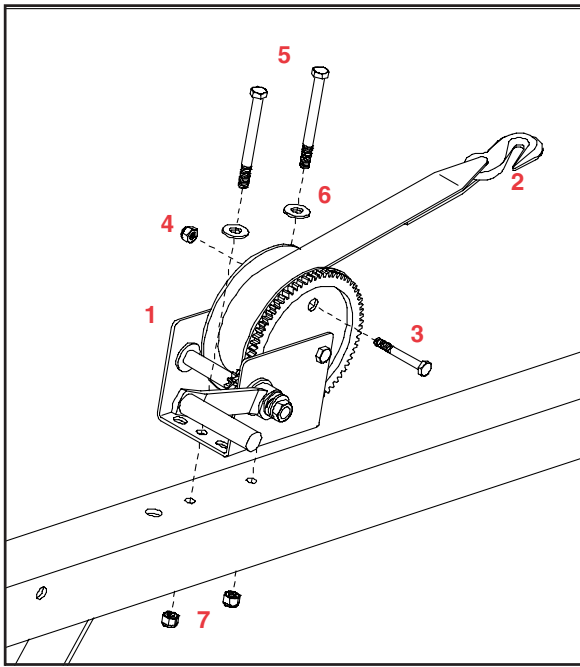
ASSEMBLY INSTRUCTIONS

Push the rubber brake line (#6) through the hole in the top of the tongue channel and attach the brake hose to the bottom of the brake tee (#7). Install the 5/16" x 3/4" grade 5 bolt (#8) that mounts brake tee and tighten. Make sure all connections are tight. Secure the actuator and lift handle w/ spacer bushing to the front end of the tongue with two 1/2" x 5-1/2" gr.5 bolts, one 1/2" x 4-1/2" gr.5 bolt, and locknuts.

Use the 4-1/2" metal brake line (#1) to make the connection from the DA91D actuator to the brake line (#4) coming out the top of the tongue. Make sure all brake line connections are tight. Follow the bleeding procedure as outlined on following page. For brake units the retainer washers on the lug bolts next to the drum have been installed at the factory (two per drum).

Please order replacement parts by PART NO. and DESCRIPTION.

OPTIONAL WINCH



PARTS LIST

REF. NO.	PART NO.	QTY.	DESCRIPTION
	RKW	1	Optional Winch
1.	04620	1	Winch Mechanism (1400 capacity)
-	04621	-	Replacement Handle
2.	01738	1	Strap Assembly (includes strap & hook)
3.	04221	1	5/16"-18UNC x 2-1/2" Hex Hd. Bolt (gr.5)
4.	02802	1	5/16"-18UNC Nylon Insert Locknut
5.	02769	2	3/8"-16UNC x 4" Hex Head Bolt (gr.5)
6.	00059	2	3/8" Flatwasher
7.	02592	2	3/8"-16UNC Nylon Insert Locknut

Please order replacement parts by **PART NO.** and **DESCRIPTION.**

* All options may not mount on tow dolly simultaneously.*

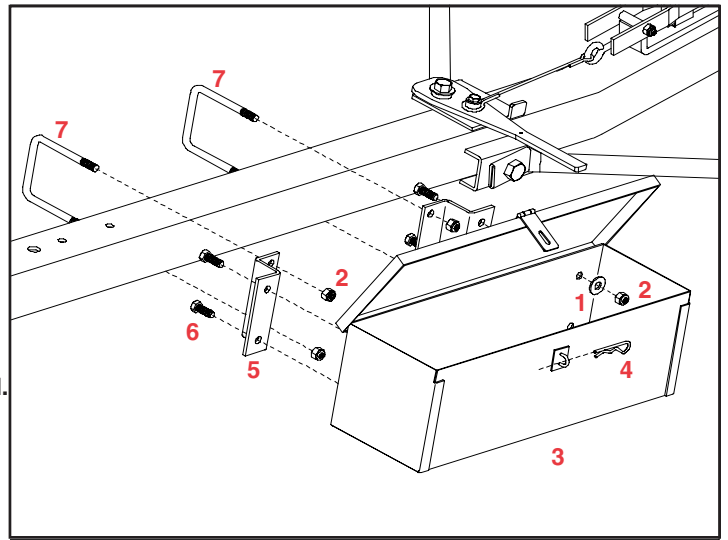
OPTIONAL TOOL BOX

PARTS LIST

RKTB	1	Optional Tool Box
1.	00059	4 3/8" Flatwasher
2.	02592	8 3/8"-16UNC Nylon Insert Locknut
3.	01888-30	1 Tool Box
4.	00182	1 Small Hair Pin
5.	02717-30	2 Mounting "Z" Bracket
6.	00907	4 3/8"-16UNC x 1" Hex Head Bolt (gr.5)
7.	02759	2 3/8"-16UNC x 3" Square U-Bolt

Please order replacement parts by **PART NO.** and **DESCRIPTION.**

* All options may not mount on tow dolly simultaneously.*



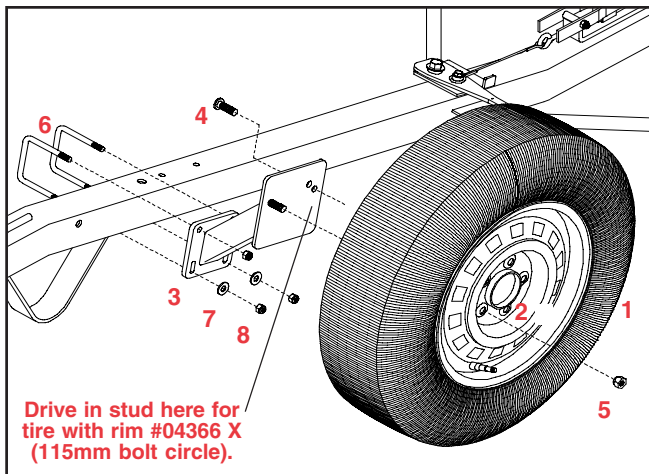
OPTIONAL SPARE TIRE and MOUNT

PARTS LIST

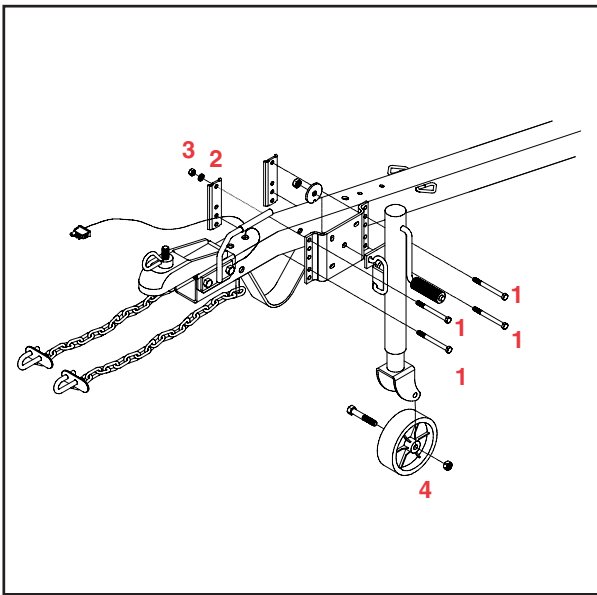
REF. NO.	PART NO.	QTY.	DESCRIPTION
	RK4ST	1	Optional Spare Tire
2.	04366	1	5.5 x 14" Rim
	RKSTM	1	Spare Tire Mounting Bracket
3.	02193-30	1	Spare Tire Bracket
4.	02917	1	Stud Bolt (12mm x 1.5)
5.	02213	2	Wheel Nut (12mm)
6.	02759	2	3/8"-16UNC Square U-Bolt
7.	00059	2	3/8" Flatwasher
8.	02592	4	3/8"-16UNC Nylon Insert Locknut

Please order replacement parts by **PART NO.** & **DESCRIPTION.**

* All options may not mount on tow dolly simultaneously.*



OPTIONAL WHEEL JACK



WHEEL JACK PARTS LIST

-		RK2WJ	1	Optional Wheel Jack w/ hardware
1.	02769	4	3/8"-16 UNC x 4" Hex Head Bolt	
2.	00060	4	3/8" Lockwasher	
3.	00061	4	3/8"-16 UNC Hex Nut	
4.	04445	-	Replacement Wheel only	

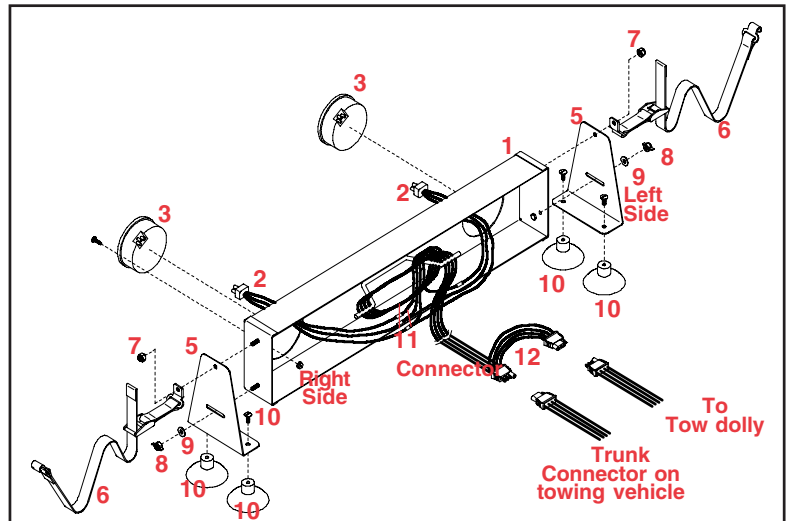
Please order replacement parts by PART NO. and DESCRIPTION.

* All options may not mount on tow dolly simultaneously.*

OPTIONAL LIGHT BAR

COLOR CODE for WIRING HARNESS

Wiring Harness		Triple Wire Plug
WHITE	Ground	WHITE
BROWN	Tail Lights and License Plate Light	BLACK
YELLOW	Left Turn and Stop	RED
GREEN	Right Turn and Stop	RED



LIGHT BAR PARTS LIST

REF. NO.	PART NO.	QTY.	DESCRIPTION
RKLB 1 Optional Light Bar			
1.	02731-50	1	Light Bar Framework
2.	02313	2	Pigtail with 3-way Plug (for tail light)
3.	05446	2	Sealed Round Tail Light
4.	05447	2	Rubber Mounting Grommet for light
5.	02732-50	2	Light Bar Side Plate
6.	02734	2	Mounting Clip with Strap
7.	02772	2	1/4"-20UNC Nylon Insert Locknut
8.	02770	2	1/4"-20UNC Nylon Insert Wing Nut
9.	00214	2	1/4" Flatwasher
10.	01778	4	3" Suction Cup w/ 1/4" x 3/4" Oven Head Bolt
11.	01883	6	Electrical Wire Splicer
12.	02198	1	Light Bar Wire Harness

Please order replacement parts by PART NO. and DESCRIPTION.



DETHMERS MFG. COMPANY

P.O. BOX 189

4010 320th St., BOYDEN, IA. 51234

PH: (712) 725-2311 FAX: (712) 725-2380

TOLL FREE: 1-800-54DEMCO (1-800-543-3626)

www.demco-products.com